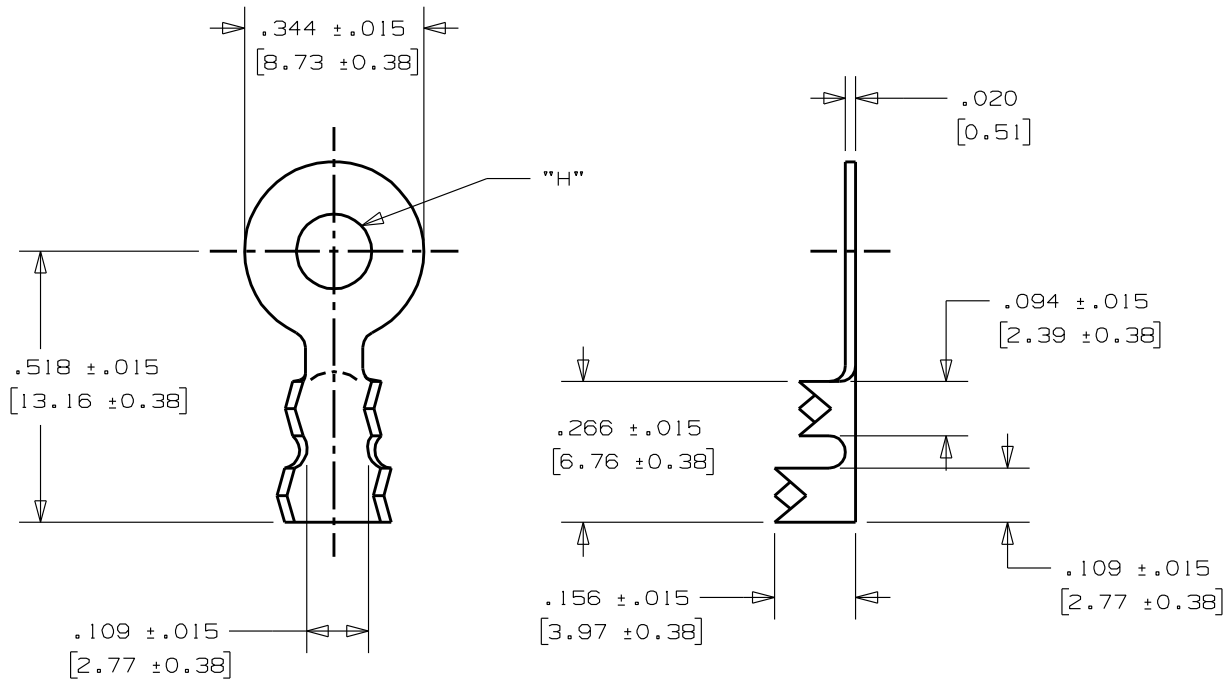


28-XXX

Rev.

APPLICATION DRAWING



PART No.	"H"	FINISH	
28-120	.120 (3.05mm)	100% MATT TIN	
28-120-1	.120 (3.05mm)	HOT SOLDER DIP (60% Tin, 40% Lead)	
28-144	.144 (3.66mm)	100% MATT TIN	
28-144-1	.144 (3.66mm)	HOT SOLDER DIP (60% Tin, 40% Lead)	
28-144-9	.144 (3.66mm)	PLAIN	
MATERIAL	28-169	.169 (4.29mm)	100% MATT TIN
.020" (0.51mm) BRASS	28-196	.196 (4.98mm)	100% MATT TIN

Zierick Product Related Recommendations are general guidelines only. Since each customer's design, process and application is different it is necessary that customers thoroughly test our products in specific applications.

ZIERICK

Radio Circle Drive
Mount Kisco, New York 10549

RING TERMINAL

THIS DOCUMENT AND THE CONFIDENTIAL INFORMATION CONTAINED HERE ARE THE PROPERTY OF ZIERICK MANUFACTURING CORPORATION AND MAY NOT BE USED IN WHOLE OR IN PART IN ANY WAY, OR COMMUNICATED TO ANY PARTY OTHER THAN THE RECIPIENT WITHOUT THE EXPRESS PRIOR WRITTEN CONSENT OF ZIERICK MANUFACTURING CORPORATION.

28-XXX