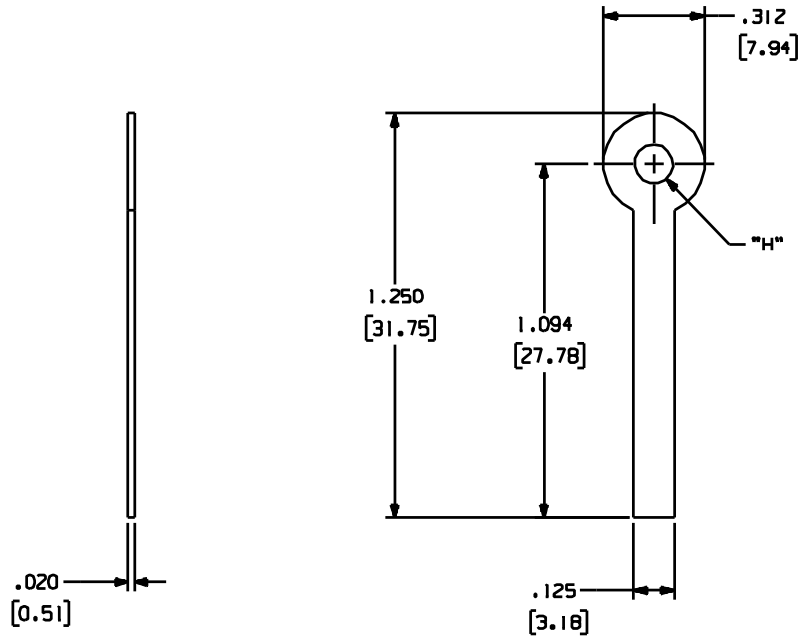


20-XXX

Rev.  
B

APPLICATION DRAWING



PART No	"H"	FINISH
20-120	.120	100% TIN OVER COPPER
20-120-2	.120	100% HOT TIN DIP
20-144	.144	100% TIN OVER COPPER
20-169	.169	100% TIN OVER COPPER
20-196	.196	100% TIN OVER COPPER
20-144-1	.144	60% TIN 40% LEAD HOT SOLDER DIP

MATERIAL
0.020" (0.51mm) BRASS

RoHS COMPLIANT

Zierick Product Related Recommendations are general guidelines only. Since each customer's design, process and application is different it is necessary that customers thoroughly test our products in specific applications.

**ZIERICK**

Radio Circle Drive  
Mount Kisco, New York 10549

FLAT SOLDER TERMINAL

THIS DOCUMENT AND THE CONFIDENTIAL INFORMATION CONTAINED HERE ARE THE PROPERTY OF ZIERICK MANUFACTURING CORPORATION AND MAY NOT BE USED IN WHOLE OR IN PART IN ANY WAY, OR COMMUNICATED TO ANY PARTY OTHER THAN THE RECIPIENT WITHOUT THE EXPRESS PRIOR WRITTEN CONSENT OF ZIERICK MANUFACTURING CORPORATION.

20-XXX

B