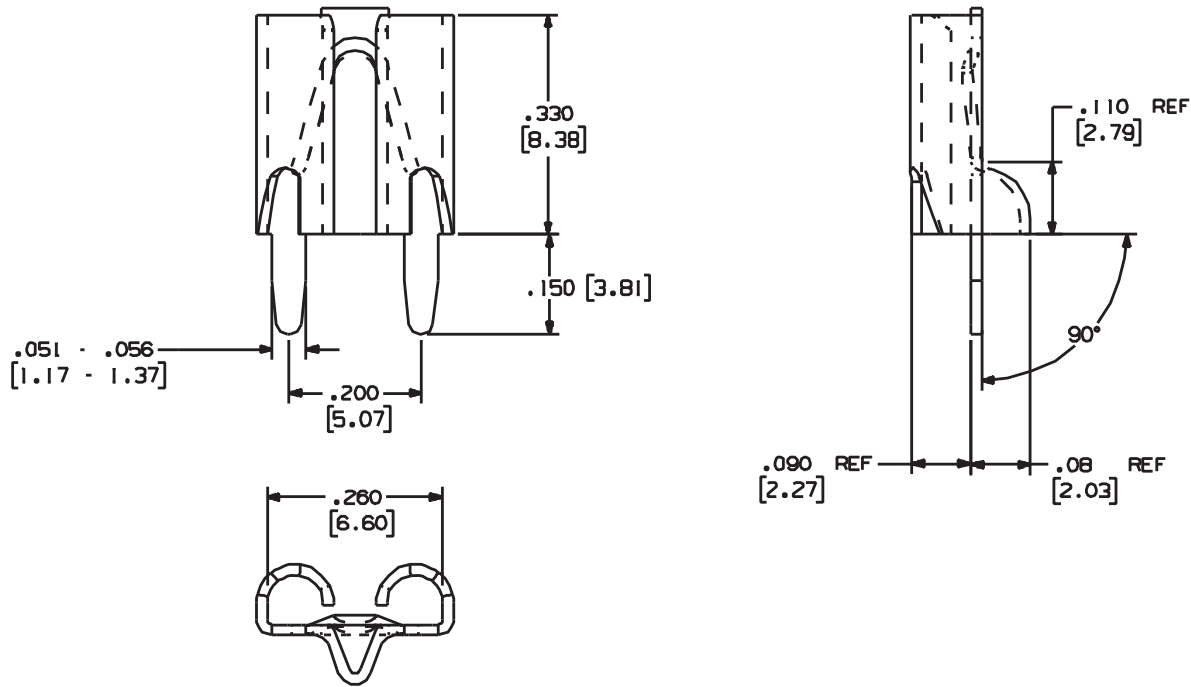


1154-6154-1225-6225

Rev.

APPLICATION DRAWING



PART NUMBER	MATING TERMINAL SIZE	MATERIAL	FINISH
6154 REELED PART NUMBER	.250 X .025 6.35mm X 0.64mm TAB	.016 0.41mm BRASS	100% MATTE TIN OVER COPPER
1154	.250 X .025 6.35mm X 0.64mm TAB	.016 0.41mm BRASS	100% MATTE TIN OVER COPPER
6225 REELED PART NUMBER	.250 X .032 6.35mm X 0.81mm TAB	.016 0.41mm BRASS	100% MATTE TIN OVER COPPER
1225	.250 X .032 6.35mm X 0.81mm TAB	.016 0.41mm BRASS	100% MATTE TIN OVER COPPER

RoHS COMPLIANT

Zierick Product Related Recommendations are general guidelines only. Since each customer's design, process and application is different it is necessary that customers thoroughly test our products in specific applications.

ZIERICK

Radio Circle Drive
Mount Kisco, New York 10549

.250 PCF STABLE-LOK
TERMINAL

THIS DOCUMENT AND THE CONFIDENTIAL INFORMATION CONTAINED HERE ARE THE PROPERTY OF ZIERICK MANUFACTURING CORPORATION AND MAY NOT BE USED IN WHOLE OR IN PART IN ANY WAY, OR COMMUNICATED TO ANY PARTY OTHER THAN THE RECIPIENT WITHOUT THE EXPRESS PRIOR WRITTEN CONSENT OF ZIERICK MANUFACTURING CORPORATION.

1154-6154-1225-6225