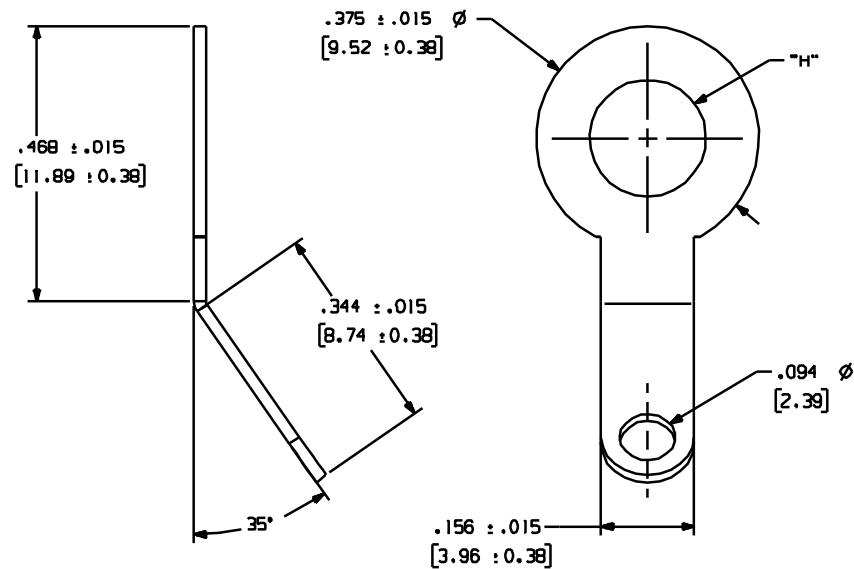


110-XXX

Rev.
F

APPLICATION DRAWING



RoHS COMPLIANT

MATERIAL
.020" (0.51mm) BRASS

PART NO.	"H"	FINISH
110-144	.144" (3.66mm)	100% MATTE TIN OVER COPPER
110-196	.196" (4.98mm)	100% MATTE TIN OVER COPPER
110-196-1	.196" (4.98mm)	HOT SOLDER DIP (60% TIN 40% LEAD)
110-250	.250" (6.35mm)	100% MATTE TIN OVER COPPER
110-250-1	.250" (6.35mm)	HOT SOLDER DIP (60% TIN 40% LEAD)
110-250-2	.250" (6.35mm)	HOT TIN DIP (100%)

Zierick Product Related Recommendations are general guidelines only. Since each customer's design, process and application is different it is necessary that customers thoroughly test our products in specific applications.

ZIERICKRadio Circle Drive
Mount Kisco, New York 10549

ANGLE SOLDER TERMINAL

THIS DOCUMENT AND THE CONFIDENTIAL INFORMATION CONTAINED HERE ARE THE PROPERTY OF ZIERICK MANUFACTURING CORPORATION AND MAY NOT BE USED IN WHOLE OR IN PART IN ANY WAY, OR COMMUNICATED TO ANY PARTY OTHER THAN THE RECIPIENT WITHOUT THE EXPRESS PRIOR WRITTEN CONSENT OF ZIERICK MANUFACTURING CORPORATION.

110-XXX

F