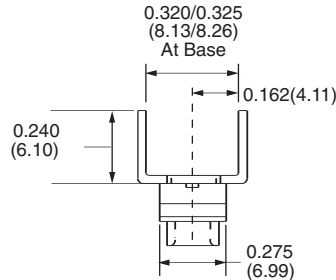
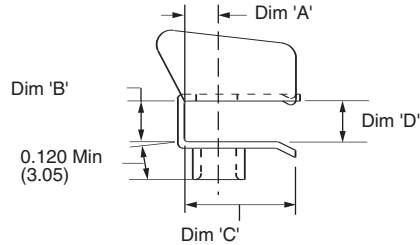
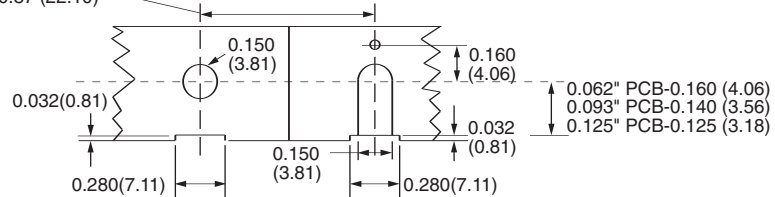


MAGTERM Screw Terminals/ Binding Posts



150V-0.61 (15.49)
300V-0.74 (18.80)
600V-0.87 (22.10)



PCB Mounting Configuration for:
Unassembled Magterm Application

Pre-Assembled Magterm Application

Loose Part No.	M6111	M6112
Material Thickness/ Type	0.032" (0.81mm) Brass	0.032" (0.81mm) Brass
Standard Finish	100% Tin over Copper	
Screw Specifications	No Screw	
Dim 'A'	0.160" (4.06mm)	0.145" (3.68mm)
Dim 'B'	0.070"/0.075" (1.78mm/1.91mm)	0.102"/0.107" (2.59mm/2.72mm)
Dim 'C'	0.380" (9.65mm)	0.365" (9.27mm)
Dim 'D'	0.048"/0.058" (1.22mm/1.47mm)	0.081"/0.091" (2.06mm/2.31mm)

Note: Screws and wire clamps must be ordered separately