

ZIERICK

ENGINEERED INTERCONNECTION SOLUTIONS

131 Radio Circle, Mt. Kisco, NY 10549 USA
800-882-8020 • 914-666-2911 • Fax: 914-666-0216
www.zierick.com • contactus@zierick.com



FEATURES & BENEFITS

- Most economical way to terminate wire to board;
- Smallest footprint;
- High current carrying capability
- current rating of the termination is the same as the current rating of the terminated wire
- terminal acts as a heat sink;
- No separate strain relief required;
- High resistance to wire flexing and axial and radial pull forces;
- Terminal lends itself to high speed automated termination;
- Designed to be bulk fed with a special feeder - no surface mount taping required, making terminal more economical in high volume applications;
- Available in taped format for low volume users.

SURFACE MOUNT INSULATION PIERCING CRIMP TERMINALS PART NUMBER 1286

Zierick Manufacturing Corp. has developed a new highly reliable and economical way to connect a wire to a Surface Mount Printed Circuit Board. This new innovation consists of an SMT mounted insulation piercing crimp terminal and a special tool which places the wire into the terminal and crimps it to lock it in position.

This method of wire connection to a PCB is more economical than all other methods currently being used, such as two-piece pin and receptacle types of connections, IDCs, or hand soldering. It has a small footprint, similar in real estate to a hand soldered wire. It is highly reliable since it uses a well proven crimping technology with unique Insulation Piercing Spikes (IPS). The IPS inside the part penetrate through the wire insulation to the core of the wire and provide a gas-tight connection during the crimping process. With this method, there is no need to strip

the insulation from the wire and the termination can be made not only at the end of the wire, but at any place along the length of the wire. This makes the crimp terminal especially useful with in-line applications, when multiple terminations are required for one single wire such as a series of diodes used in block lettering display applications.

The other important component of this system is the wire terminating crimp tool. It not only terminates the wire, but also feeds, or stitches the wire into the terminal, eliminating any work related to wire handling.

It is the smallest and the most economical terminal available for an SMT Wire to Board application, and utilizes well proven and reliable technology.

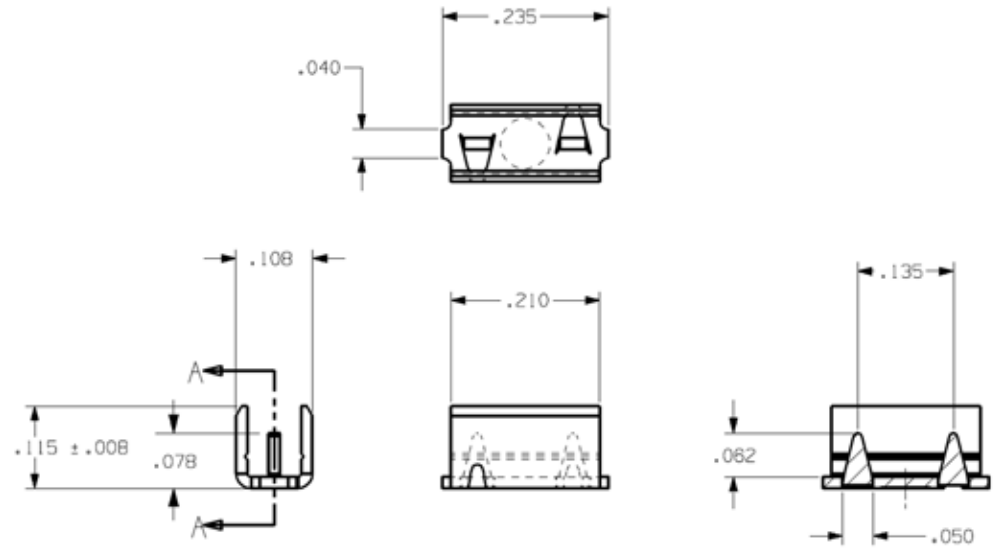


SPECIFICATIONS

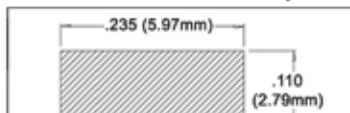
Loose Part Number	1286
Taped Part Number	1286T
Material Thickness	0.016" (0.41mm)
Material Type	CDA 260 Brass
Standard Finish	Pre-Plated 100% Tin over Copper
Feeder System (Loose)	Surf-Shooter SMT Loose Piece Feeder
Feeder System (Taped)	Standard 12mm Tape Feeder
U.S. Patent No.	U.S. and International Patents applied for

SURFACE MOUNT INSULATION PIERCING CRIMP TERMINALS PART NUMBER 1286 (continued)

APPLICATION DRAWING

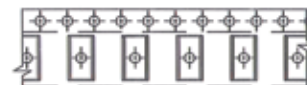


Recommended Pad Geometry

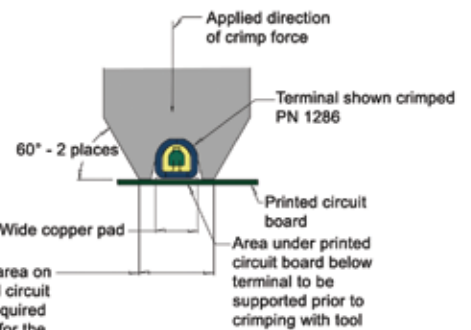
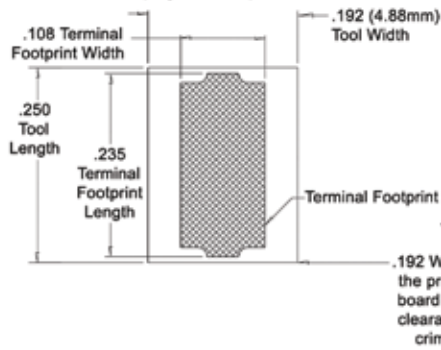


Note: It is good practice to make the copper pad as large as possible and solder mask it to expose the recommended solder paste area (shown crosshatched).

Solder Paste Over Copper Pad (Crosshatched)



Crimping Tool Footprint



Old Technology:
Tedious, time consuming,
labor intensive, and
environmentally unfriendly
hand soldering



New Technology:
Economical, clean, slick
and quick SMT Insulation
Piercing Connector

