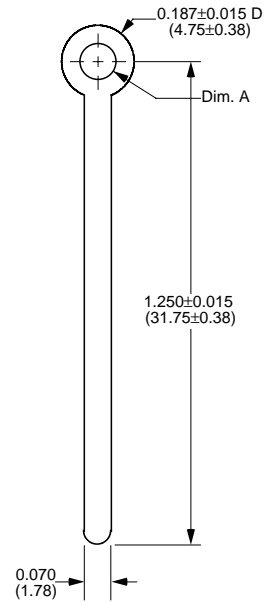
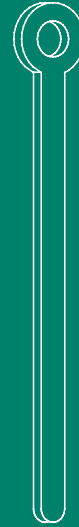
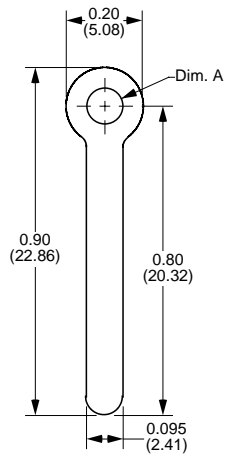


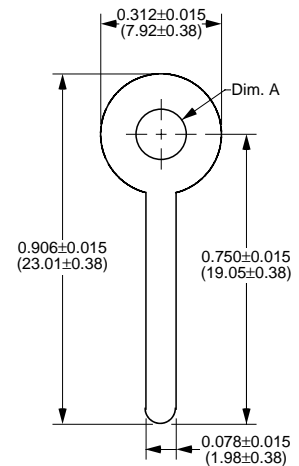
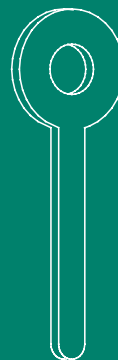
Part Number	Material Type	Finish Code	Inventory Type	Dim. 'A'
414-113	0.020" (0.51mm) Copper	0	Stock	0.113" (2.87mm)



Part Number	Material Type	Finish Code	Inventory Type	Dim. 'A'
263-093	0.020" (0.51mm) Copper	11	Stock	0.093" (2.36mm)



Part Number	Material Type	Finish Code	Inventory Type	Dim. 'A'
598-093	0.020" (0.51mm) Copper	0	Special	0.093" (2.36mm)



Part Number	Material Type	Finish Code	Inventory Type	Dim. 'A'
680-130	0.020" (0.51mm) Brass	0	Stock	0.130" (3.30mm)