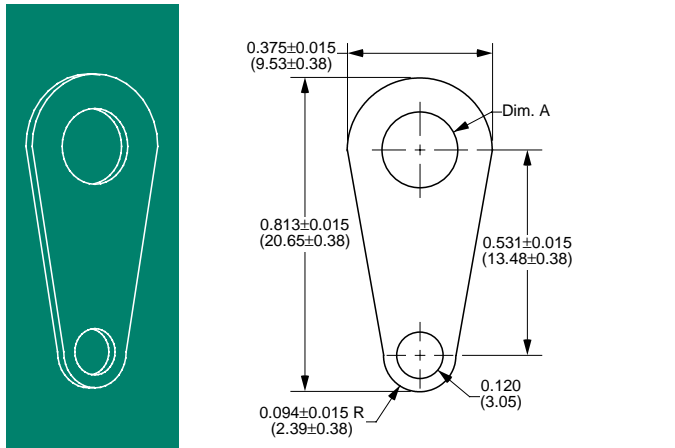
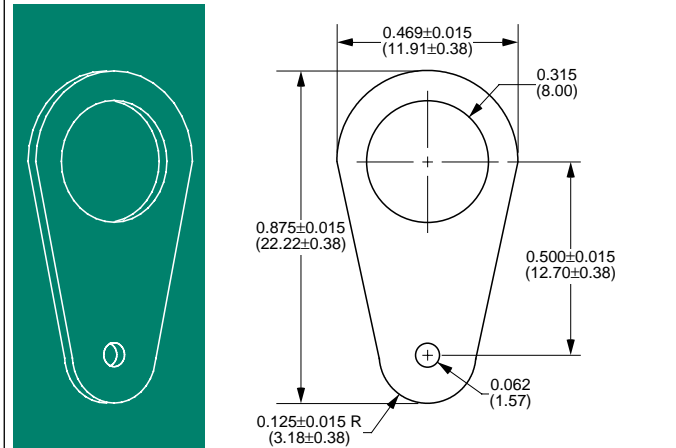


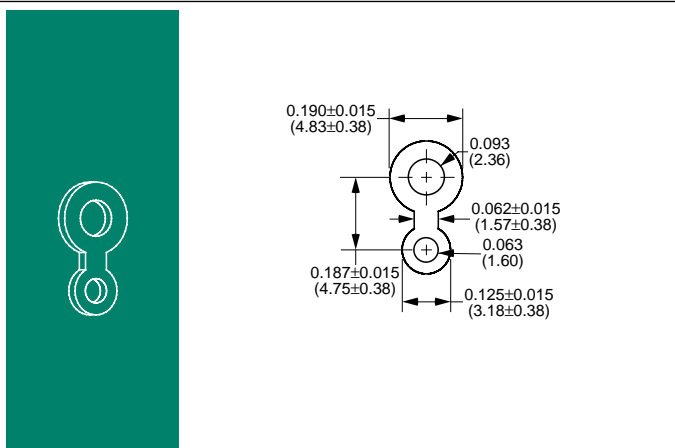
Solder Terminals



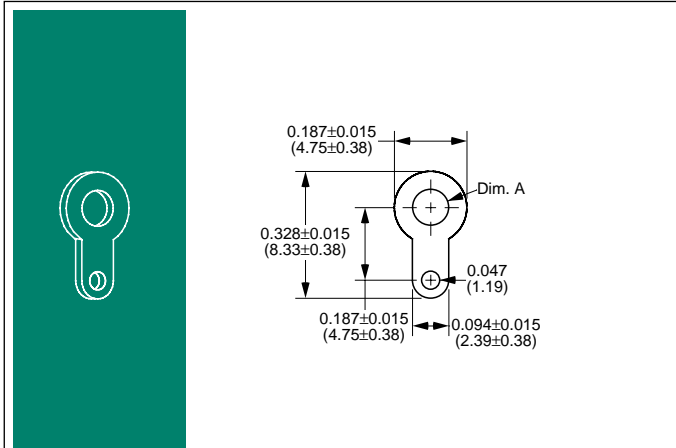
Part Number	Material Type	Finish Code	Inventory Type	Dim. 'A'
29A-187	0.016" (0.41mm) Copper	0	Stock	0.187" (4.75mm)
29A-196	0.016" (0.41mm) Copper	0	Stock	0.196" (4.98mm)
29A-250	0.016" (0.41mm) Copper	0	Stock	0.250" (6.35mm)



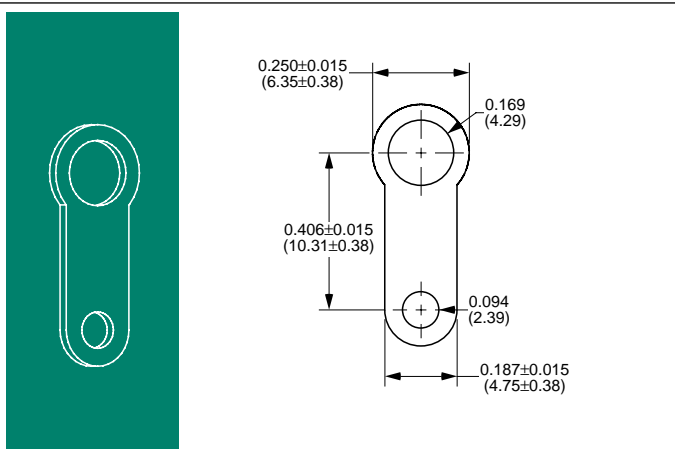
Part Number	Material Type	Finish Code	Inventory Type	Dim. 'A'
80-315	0.020" (0.51mm) Copper	0	Stock	
MS 35431-10	0.020" (0.51mm) Copper	MS	Special	



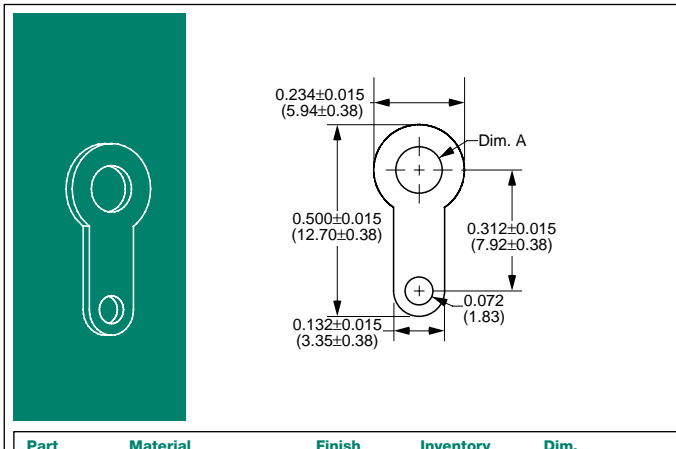
Part Number	Material Type	Finish Code	Inventory Type	Dim. 'A'
542-093	0.016" (0.41mm) Copper	0	Stock	



Part Number	Material Type	Finish Code	Inventory Type	Dim. 'A'
341-093	0.016" (0.41mm) Copper	0	Stock	0.093" (2.36mm)
341-120	0.016" (0.41mm) Copper	0	Stock	0.120" (3.05mm)
341-125	0.016" (0.41mm) Copper	0	Stock	0.125" (3.18mm)



Part Number	Material Type	Finish Code	Inventory Type	Dim. 'A'
390-169	0.016" (0.41mm) Copper	0	Stock	



Part Number	Material Type	Finish Code	Inventory Type	Dim. 'A'
75-093	0.016" (0.41mm) Copper	0	Stock	0.093" (2.36mm)
75-100	0.016" (0.41mm) Copper	0	Stock	0.100" (2.54mm)
75-120	0.016" (0.41mm) Copper	0	Stock	0.120" (3.05mm)
75-130	0.016" (0.41mm) Copper	0	Stock	0.130" (3.30mm)
75-144	0.016" (0.41mm) Copper	0	Stock	0.144" (3.66mm)