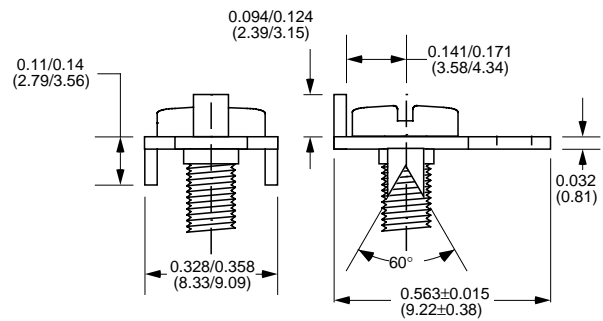
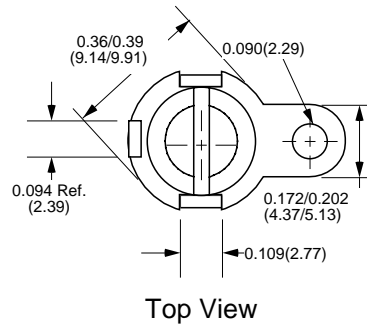
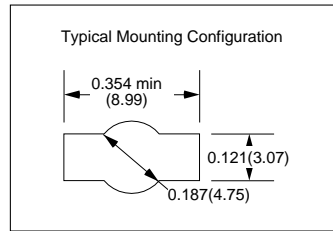
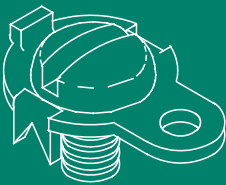


Part Number	Material Type	Finish Code	Screw Type	Screw Position	Inventory Type
945	Brass	0	Tin Plated Brass 3/8" x 8-32	Screw Inserted & Down	Stock
1006	Brass	0	No Screw	No Screw	Special
1006 No Tap	Brass	0	No Screw	No Screw 0.14" (3.81mm) Hole	Special



Part Number	Material Type	Finish Code	Screw Type	Screw Position	Inventory Type
348	Brass	0	With Screw	No Screw	Special
792	Brass	0	No Screw	No Screw	Stock