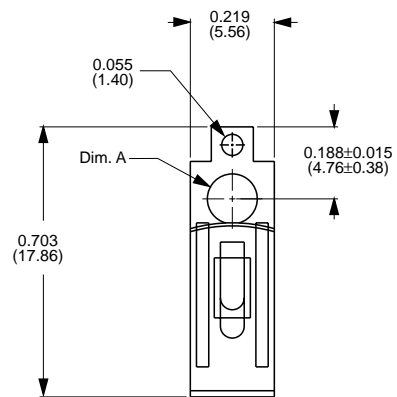
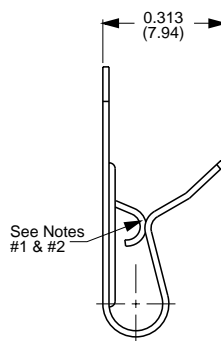
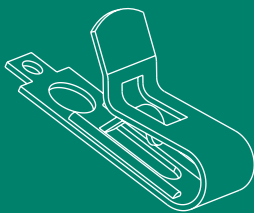


NOTES:

- 1- WHEN SPRING IS COMPRESSED, AN 0.093" DIA. PIN SHOULD PUSH THROUGH.
- 2- WHEN SPRING IS RELAXED, AN 0.016" DIA. PIN SHOULD BE HELD IN PLACE.

Part Number	Material Type	Finish Code	Inventory Type	Dim. 'A'
146-144	Brass	7	Stock	0.144" (3.66mm)
146-144-9	Brass	9	Stock	0.144" (3.66mm)



NOTES:

- 1- WHEN SPRING IS COMPRESSED, AN 0.060" DIA. PIN SHOULD PUSH THROUGH.
- 2- WHEN SPRING IS RELAXED, AN 0.016" DIA. PIN SHOULD BE HELD IN PLACE.

Part Number	Material Type	Finish Code	Inventory Type	Dim. 'A'
255-130	Brass	7	Stock	0.130" (3.30mm)
255-130-9	Brass	9	Stock	0.130" (3.30mm)