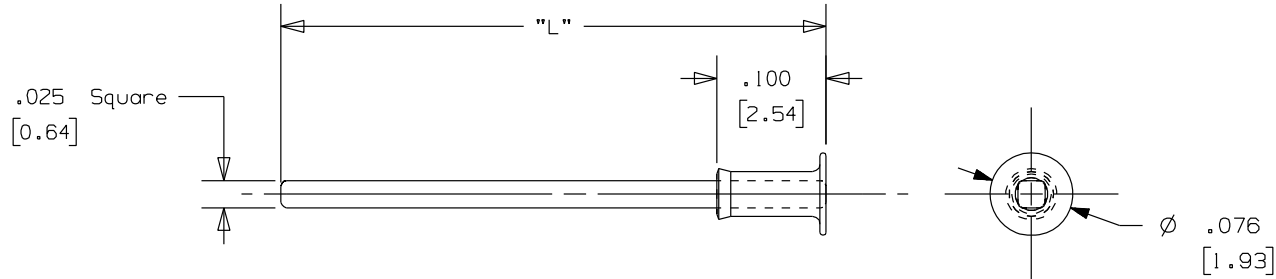


AI-XXX

Rev.
G1

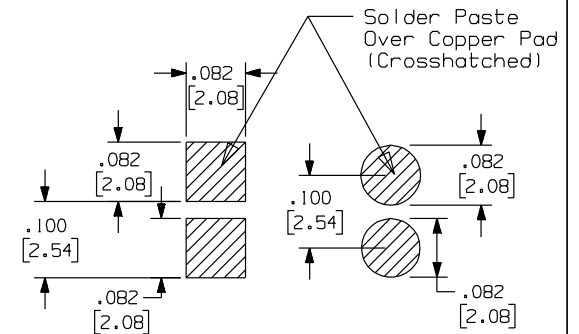
APPLICATION DRAWING



LAST UPDATE
01/24/17

Recommended Solder Pad Geometry

PART NO.	"L"	MATERIAL	FINISH
AI-250	.250 (6.35mm)	CDA 260 BRASS	.000150 MIN 100% TIN OVER .000100 MIN COPPER
AI-375	.375 (9.52mm)	CDA 260 BRASS	.000150 MIN 100% TIN OVER .000100 MIN COPPER
AI-421	.421 (10.7mm)	CDA 260 BRASS	.000150 MIN 100% TIN OVER .000100 MIN COPPER
AI-500	.500 (12.7mm)	CDA 260 BRASS	.000150 MIN 100% TIN OVER .000100 MIN COPPER
AI-625	.625 (15.88mm)	CDA 260 BRASS	.000150 MIN 100% TIN OVER .000100 MIN COPPER
AI-750	.750 (19.1mm)	CDA 260 BRASS	.000150 MIN 100% TIN OVER .000100 MIN COPPER
AI-250-19	.250 (6.35mm)	CDA 260 BRASS	.000030" MIN HARD GOLD OVER .000050" MIN NICKEL
AI-375-19	.375 (9.52mm)	CDA 260 BRASS	.000030" MIN HARD GOLD OVER .000050" MIN NICKEL
AI-500-19	.500 (12.7mm)	CDA 260 BRASS	.000030" MIN HARD GOLD OVER .000050" MIN NICKEL
AI-625-19	.625 (15.88mm)	CDA 260 BRASS	.000030" MIN HARD GOLD OVER .000050" MIN NICKEL
AI-750-19	.750 (19.1mm)	CDA 260 BRASS	.000030" MIN HARD GOLD OVER .000050" MIN NICKEL



RoHS COMPLIANT

Zierick Product Related Recommendations are general guidelines only. Since each customer's design, process and application is different it is necessary that customers thoroughly test our products in specific applications.

ZIERICK

Radio Circle Drive
Mount Kisco, New York 10549

.025 SQ. ROUND BASE
TWO PIECE PIN

THIS DOCUMENT AND THE CONFIDENTIAL INFORMATION CONTAINED HERE ARE THE PROPERTY OF ZIERICK MANUFACTURING CORPORATION AND MAY NOT BE USED IN WHOLE OR IN PART IN ANY WAY, OR COMMUNICATED TO ANY PARTY OTHER THAN THE RECIPIENT WITHOUT THE EXPRESS PRIOR WRITTEN CONSENT OF ZIERICK MANUFACTURING CORPORATION.

AI-XXX

G1