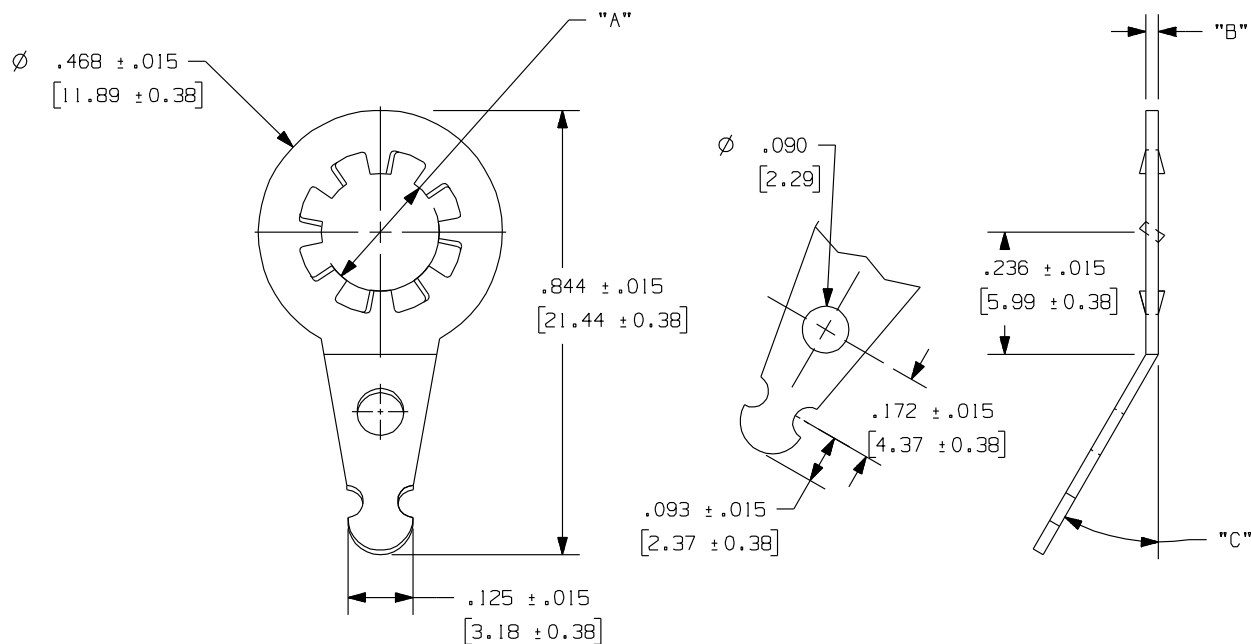


932-XXX, 934-XXX, 937-XXX  
MS77069-X, MS77073-X

Rev.

# APPLICATION DRAWING



PART No.	"A"	"B"	"C"	FINISH
932-224	.221" / .231" (5.61/5.87mm)	.018" (0.46mm) BRONZE	30°	100% TIN OVER COPPER
932-265	.256" / .267" (6.50/5.87mm)	.018" (0.46mm) BRONZE	30°	100% TIN OVER COPPER
MS77069-1	.195" / .204" (4.95/5.18mm)	.018" (0.46mm) BRONZE	30°	100% TIN OVER COPPER
MS77069-2	.221" / .231" (5.61/5.87mm)	.018" (0.46mm) BRONZE	30°	100% TIN OVER COPPER
MS77069-3	.256" / .267" (6.50/5.87mm)	.018" (0.46mm) BRONZE	30°	100% TIN OVER COPPER
936-196	.195" / .204" (4.95/5.18mm)	.018" (0.46mm) BRONZE	-°	100% TIN OVER COPPER
936-265	.256" / .267" (6.50/5.87mm)	.018" (0.46mm) BRONZE	-°	100% TIN OVER COPPER
MS77073-1	.195" / .204" (4.95/5.18mm)	.018" (0.46mm) BRONZE	-°	100% TIN OVER COPPER
MS77073-2	.221" / .231" (5.61/5.87mm)	.018" (0.46mm) BRONZE	-°	100% TIN OVER COPPER
937-196	.195" / .204" (4.95/5.18mm)	.025" (0.64mm) BRONZE	30°	100% TIN OVER COPPER
937-224	.221" / .231" (5.61/5.87mm)	.025" (0.64mm) BRONZE	30°	100% TIN OVER COPPER
937-265	.256" / .267" (6.50/5.87mm)	.025" (0.64mm) BRONZE	30°	100% TIN OVER COPPER

RoHS COMPLIANT

Zierick Product Related Recommendations are general guidelines only. Since each customer's design, process and application is different it is necessary that customers thoroughly test our products in specific applications.

## ZIERICK

Radio Circle Drive  
Mount Kisco, New York 10549

LOCKWASHER TERMINAL

THIS DOCUMENT AND THE CONFIDENTIAL INFORMATION CONTAINED HERE ARE THE PROPERTY OF ZIERICK MANUFACTURING CORPORATION AND MAY NOT BE USED IN WHOLE OR IN PART IN ANY WAY, OR COMMUNICATED TO ANY PARTY OTHER THAN THE RECIPIENT WITHOUT THE EXPRESS PRIOR WRITTEN CONSENT OF ZIERICK MANUFACTURING CORPORATION.

932-XXX, 934-XXX, 937-XXX  
MS77069-X, MS77073-X