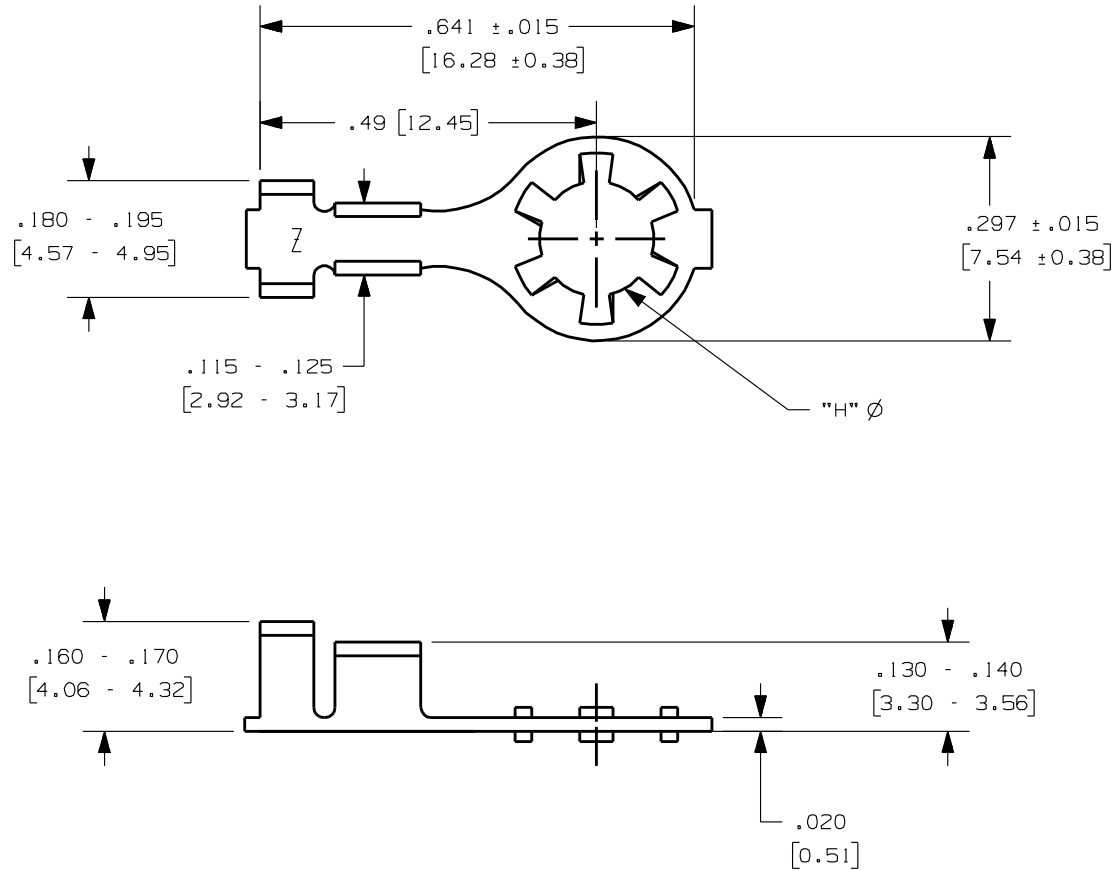


913, 915, 5037

Rev.

APPLICATION DRAWING



PART No.	MATERIAL	"H"	PACKAGE TYPE
913-144-11	PRE-TINNED BRASS	.144 [3.66mm]	LOOSE PC.
913-169-11	PRE-TINNED BRASS	.169 [4.29mm]	LOOSE PC.
915-144	PRE-TINNED BRASS	.144 [3.66mm]	LOOSE PC.
915-169	PRE-TINNED BRASS	.169 [4.29mm]	LOOSE PC.
5037-144	PLAIN BRASS	.144 [3.66mm]	REELED
5037-144-11	PRE-TINNED BRASS	.144 [3.66mm]	REELED
5037-169-11	PRE-TINNED BRASS	.169 [4.29mm]	REELED

Zierick Product Related Recommendations are general guidelines only. Since each customer's design, process and application is different it is necessary that customers thoroughly test our products in specific applications.

ZIERICK

Radio Circle Drive
Mount Kisco, New York 10549

RING TERMINAL

THIS DOCUMENT AND THE CONFIDENTIAL INFORMATION CONTAINED HERE ARE THE PROPERTY OF ZIERICK MANUFACTURING CORPORATION AND MAY NOT BE USED IN WHOLE OR IN PART IN ANY WAY, OR COMMUNICATED TO ANY PARTY OTHER THAN THE RECIPIENT WITHOUT THE EXPRESS PRIOR WRITTEN CONSENT OF ZIERICK MANUFACTURING CORPORATION.

913, 915, 5037