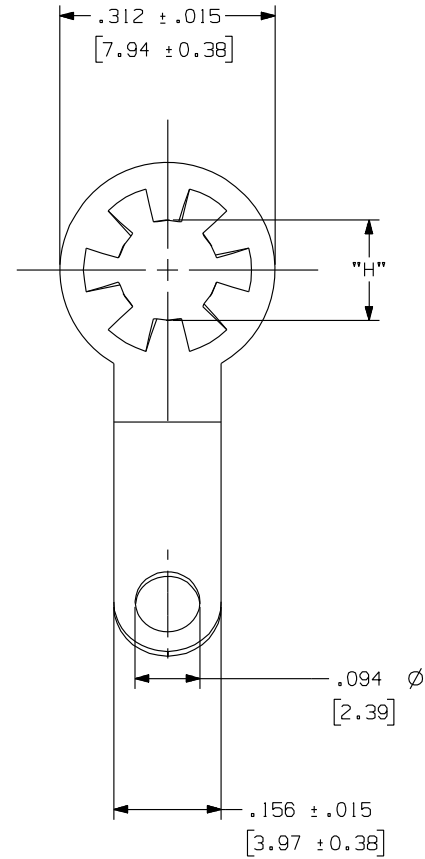
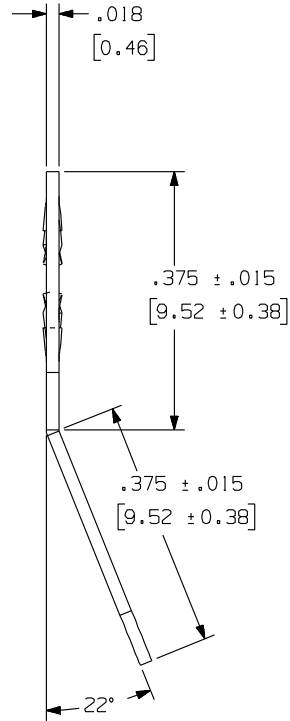


809-XXX

Rev.  
G

APPLICATION DRAWING



PART No.	"H"	FINISH
809-120	.120 (3.04)	100% MATTE TIN OVER COPPER
809-120-5	.120 (3.04)	POLISHED
809-120-9	.120 (3.04)	NO FINISH (BARE BASE METAL)
809-144	.144 (3.66)	100% MATTE TIN OVER COPPER
809-169	.169 (4.29)	100% MATTE TIN OVER COPPER

RoHS COMPLIANT

MATERIAL : .018(0.46mm) BRONZE

Zierick Product Related Recommendations are general guidelines only. Since each customer's design, process and application is different it is necessary that customers thoroughly test our products in specific applications.

**ZIERICK**

Radio Circle Drive  
Mount Kisco, New York 10549

LOCKWASHER TERMINAL

THIS DOCUMENT AND THE CONFIDENTIAL INFORMATION CONTAINED HERE ARE THE PROPERTY OF ZIERICK MANUFACTURING CORPORATION AND MAY NOT BE USED IN WHOLE OR IN PART IN ANY WAY, OR COMMUNICATED TO ANY PARTY OTHER THAN THE RECIPIENT WITHOUT THE EXPRESS PRIOR WRITTEN CONSENT OF ZIERICK MANUFACTURING CORPORATION.

809-XXX

G