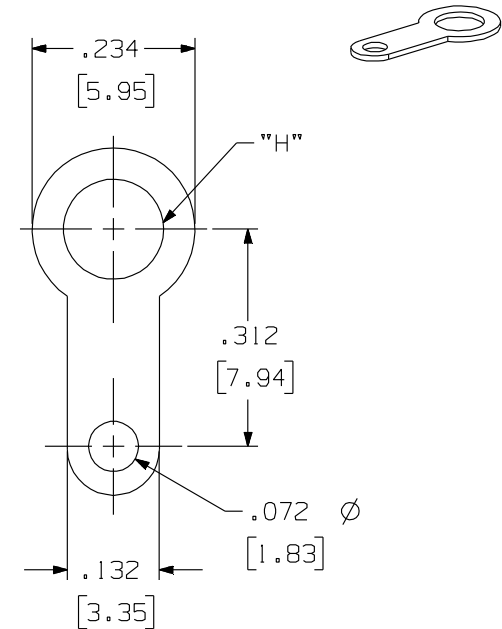
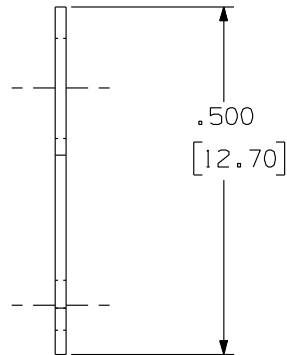


75-XXX

Rev.  
E

## APPLICATION DRAWING



PART NUMBER	"H"	MATERIAL	FINISH
75-093	.093" (2.34mm)	.016 (0.41mm) COPPER	100% TIN OVER COPPER
75-093-1	.093" (2.34mm)	.016 (0.41mm) COPPER	HOT SOLDER DIP
75-100	.100" (2.54mm)	.016 (0.41mm) COPPER	100% TIN OVER COPPER
75-120	.120" (3.05mm)	.016 (0.41mm) COPPER	100% TIN OVER COPPER
75-120-1	.120" (3.05mm)	.016 (0.41mm) COPPER	HOT SOLDER DIP
75-120-9	.120" (3.05mm)	.016 (0.41mm) COPPER	PLAIN
75-120-14	.120" (3.05mm)	.016 (0.41mm) COPPER	GOLD OVER NICKEL
75-130	.130" (3.30mm)	.016 (0.41mm) COPPER	100% TIN OVER COPPER
75-130-1	.130" (3.30mm)	.016 (0.41mm) COPPER	HOT SOLDER DIP
75-136	.136" (3.46mm)	.016 (0.41mm) COPPER	100% TIN OVER COPPER
75-144	.144" (3.66mm)	.016 (0.41mm) COPPER	100% TIN OVER COPPER
75-144-1	.144" (3.66mm)	.016 (0.41mm) COPPER	HOT SOLDER DIP
75-144-9	.144" (3.66mm)	.016 (0.41mm) COPPER	PLAIN
75-130-020BR-1	.130" (3.30mm)	.020" (0.51mm) BRASS	HOT SOLDER DIP
75-144-020BR	.120" (3.05mm)	.020" (0.51mm) BRASS	100% TIN OVER COPPER

Zierick Product Related Recommendations are general guidelines only. Since each customer's design, process and application is different it is necessary that customers thoroughly test our products in specific applications.

# ZIERICK

Radio Circle Drive  
Mount Kisco, New York 10549

SOLDER TERMINAL

THIS DOCUMENT AND THE CONFIDENTIAL INFORMATION CONTAINED HERE ARE THE PROPERTY OF ZIERICK MANUFACTURING CORPORATION AND MAY NOT BE USED IN WHOLE OR IN PART IN ANY WAY, OR COMMUNICATED TO ANY PARTY OTHER THAN THE RECIPIENT WITHOUT THE EXPRESS PRIOR WRITTEN CONSENT OF ZIERICK MANUFACTURING CORPORATION.

75-XXX

E