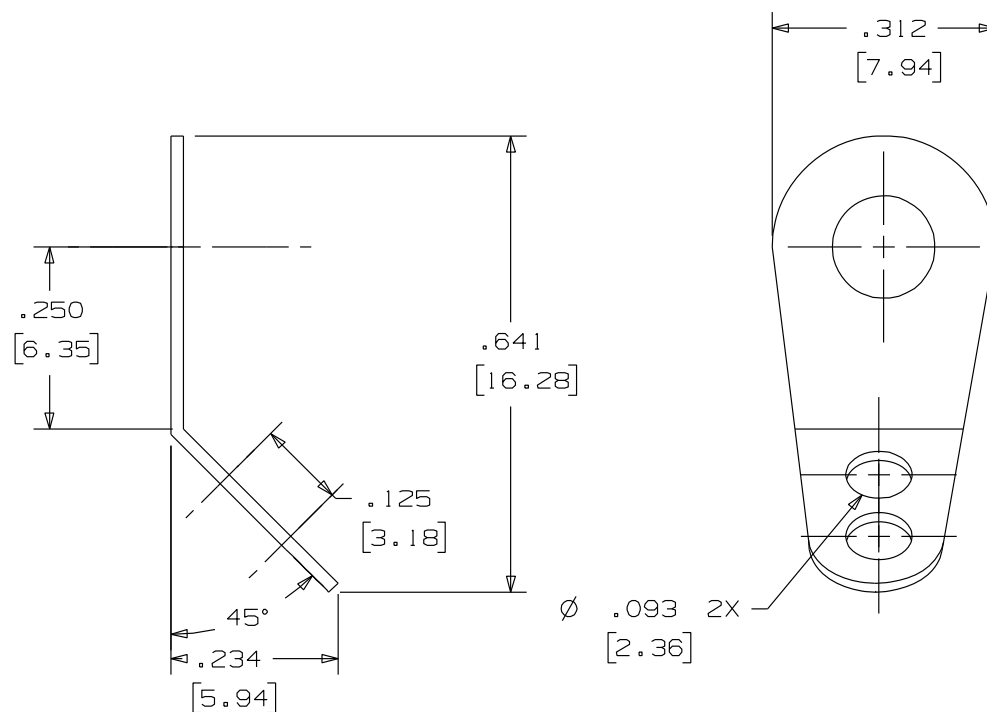
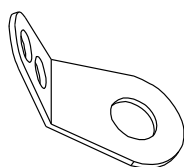


626-XXX

Rev.  
M

## APPLICATION DRAWING



## MATERIAL

.018" (0.46mm) BRONZE

PART NO.	"H"	FINISH
626-093	.093" (2.36mm)	100% MATTE TIN OVER COPPER
626-120	.120" (3.05mm)	100% MATTE TIN OVER COPPER
626-120-1	.120" (3.05mm)	HOT SOLDER DIP (60% TIN 40% LEAD)
626-120-9	.120" (3.05mm)	NO FINISH (BARE METAL)
626-128-1	.128" (3.25mm)	HOT SOLDER DIP (60% TIN 40% LEAD)
626-144	.144 (3.66mm)	100% MATTE TIN OVER COPPER
626-144-1	.144 (3.66mm)	HOT SOLDER DIP (60% TIN 40% LEAD)
626-169	.169" (4.29mm)	100% MATTE TIN OVER COPPER
626-169-1	.169" (4.29mm)	HOT SOLDER DIP (60% TIN 40% LEAD)
626-169-9	.169" (4.29mm)	NO FINISH (BARE METAL)
626-196	.196" (4.98mm)	100% MATTE TIN OVER COPPER
626-196-1	.196" (4.98mm)	HOT SOLDER DIP (60% TIN 40% LEAD)

RoHS COMPLIANT

Zierick Product Related Recommendations are general guidelines only. Since each customer's design, process and application is different it is necessary that customers thoroughly test our products in specific applications.

**ZIERICK**

Radio Circle Drive  
Mount Kisco, New York 10549

ANGLE  
SOLDER TERMINAL

THIS DOCUMENT AND THE CONFIDENTIAL INFORMATION CONTAINED HERE ARE THE PROPERTY OF ZIERICK MANUFACTURING CORPORATION AND MAY NOT BE USED IN WHOLE OR IN PART IN ANY WAY, OR COMMUNICATED TO ANY PARTY OTHER THAN THE RECIPIENT WITHOUT THE EXPRESS PRIOR WRITTEN CONSENT OF ZIERICK MANUFACTURING CORPORATION.

626-XXX

M