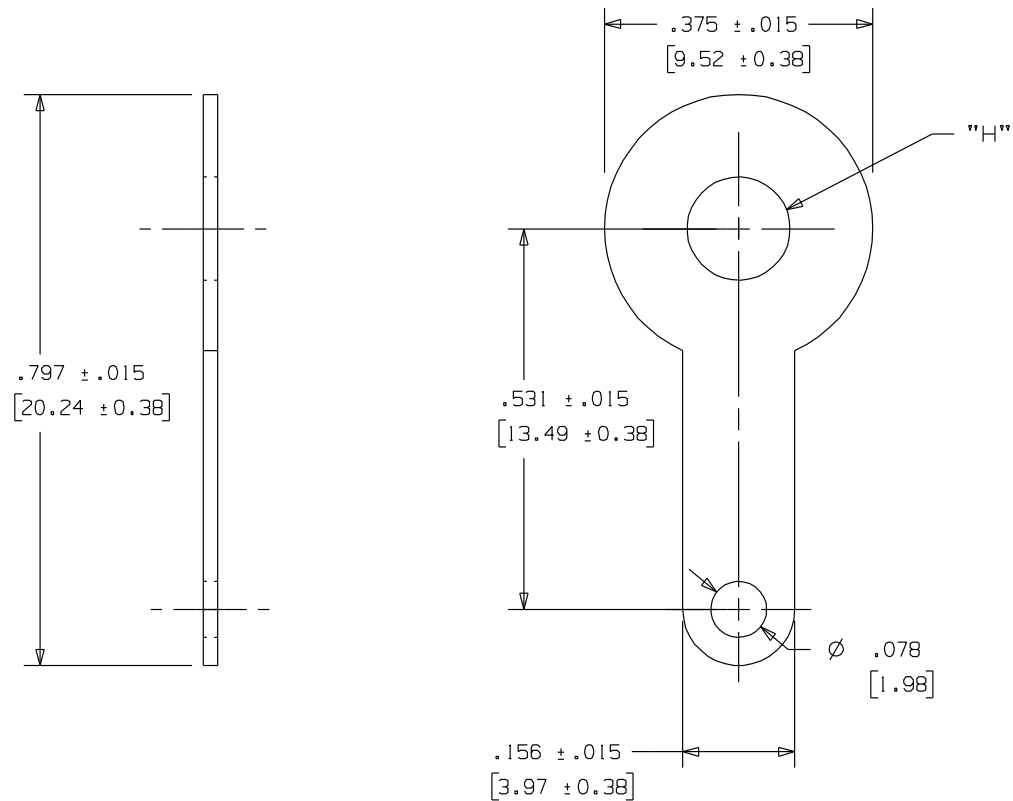


29-XXX

Rev.
C

APPLICATION DRAWING



PART No.	"H"	MATERIAL	FINISH
29-196	.196" [4.98mm]	.020 [0.51mm] BRASS	100% MATTE TIN OVER COPPER
29-196-1	.196" [4.98mm]	.020 [0.51mm] BRASS	HOT SOLDER DIP
29-196-2	.196" [4.98mm]	.020 [0.51mm] BRASS	100% HOT TIN DIP
29-250	.250" [6.35mm]	.020 [0.51mm] BRASS	100% MATTE TIN OVER COPPER
29-250-1	.250" [6.35mm]	.020 [0.51mm] BRASS	HOT SOLDER DIP
29-250-9	.250" [6.35mm]	.020 [0.51mm] BRASS	NO FINISH
29-250-ST-9	.250" [6.35mm]	.020 [0.51mm] STEEL	NO FINISH
29-260	.260" [6.60mm]	.020 [0.51mm] BRASS	100% MATTE TIN OVER COPPER

Zierick Product Related Recommendations are general guidelines only. Since each customer's design, process and application is different it is necessary that customers thoroughly test our products in specific applications.

ZIERICK

Radio Circle Drive
Mount Kisco, New York 10549

THIS DOCUMENT AND THE CONFIDENTIAL INFORMATION CONTAINED HERE ARE THE PROPERTY OF ZIERICK MANUFACTURING CORPORATION AND MAY NOT BE USED IN WHOLE OR IN PART IN ANY WAY, OR COMMUNICATED TO ANY PARTY OTHER THAN THE RECIPIENT WITHOUT THE EXPRESS PRIOR WRITTEN CONSENT OF ZIERICK MANUFACTURING CORPORATION.

FLAT SOLDER TERMINAL

29-XXX

C