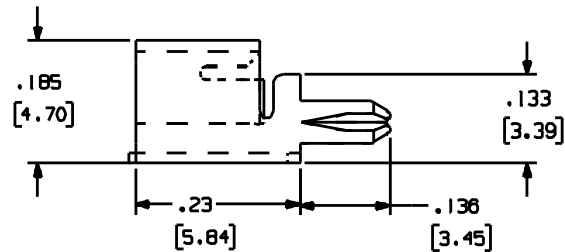
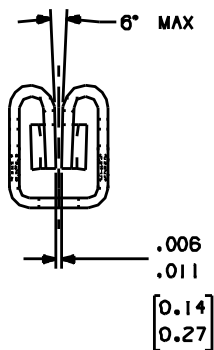
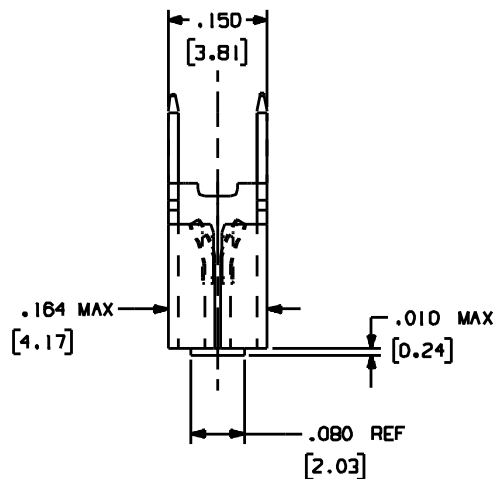


1188

Rev.

E

APPLICATION DRAWING



NOTE:
 SEE "WWW.ZIERICK.COM" FOR PCB LAYOUT.

RoHS COMPLIANT

MATERIAL	FINISH
.016 (0.41mm) BRASS	100% TIN OVER COPPER

Zierick Product Related Recommendations are general guidelines only. Since each customer's design, process and application is different it is necessary that customers thoroughly test our products in specific applications.

ZIERICK

Radio Circle Drive
 Mount Kisco, New York 10549

LOW INSERTION
 THT UNIVERSAL
 TAB RECEPTACLE

THIS DOCUMENT AND THE CONFIDENTIAL INFORMATION CONTAINED HERE ARE THE PROPERTY OF ZIERICK MANUFACTURING CORPORATION AND MAY NOT BE USED IN WHOLE OR IN PART IN ANY WAY, OR COMMUNICATED TO ANY PARTY OTHER THAN THE RECIPIENT WITHOUT THE EXPRESS PRIOR WRITTEN CONSENT OF ZIERICK MANUFACTURING CORPORATION.

1188

E