

# ZIERICK

ENGINEERED INTERCONNECTION SOLUTIONS

131 Radio Circle, Mt. Kisco, NY 10549 USA  
 800-882-8020 • 914-666-2911 • Fax: 914-666-0216  
 www.zierick.com • contactus@zierick.com



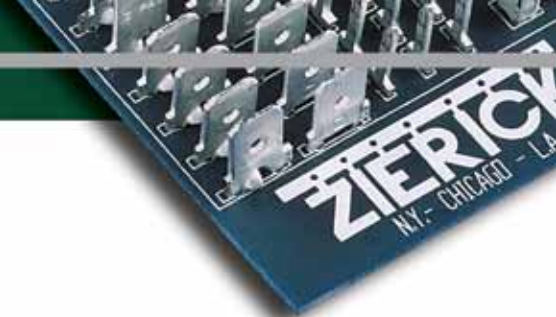
## ZIERICK MANUFACTURING CORPORATION

### 'WIRE TO BOARD' INTERCONNECT OPTIONS

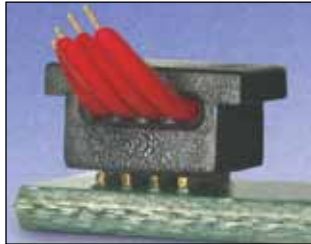
32 AWG 0.00795" 0.202mm 0.0320mm <sup>2</sup>	30 AWG 0.010" 0.255mm 0.0509mm <sup>2</sup>	28 AWG 0.0126" 0.321mm 0.0810mm <sup>2</sup>	26 AWG 0.0159" 0.405mm 0.129mm <sup>2</sup>	24 AWG 0.0201" 0.511mm 0.205mm <sup>2</sup>	22 AWG 0.0253" 0.644mm 0.326mm <sup>2</sup>	20 AWG 0.032" 0.812mm 0.518mm <sup>2</sup>	18 AWG 0.0403" 1.02mm 0.823mm <sup>2</sup>	16 AWG 0.0508" 1.29mm 1.31mm <sup>2</sup>	14 AWG 0.0641" 1.63mm 2.08mm <sup>2</sup>	12 AWG 0.0808" 2.05mm 3.31mm <sup>2</sup>	Coaxial Cable	
IPC-4-45-T (SM)												
								1293 (SM)				
			1262 / 1275 (SM)									
											IPC-2-1-T (SM)	
		1245 / 1296 / 1227 (SM)										
	1235 (SM)											
				1307 (SM)								
	1301 (SM)											
					1295 (SM)							
							1300-T (SM)					
								1174 (TH)				
						1286 (SM)						
					5044 / 5088 (TH)							
			1306-Wxx (SM)									
	1108-TORX-T (SM)											
	1030 / 1108 / 1117 / 934 ST.S (TH)											
	6114 (TH)											
							6072 (TH)					
	1182 / 1183 (TH)											
							6205 (TH)					
				1119 (TH)								
				1185 (TH)								
				1187 (TH)								

<b>Connection Type</b>	Insulation Displacement Connector (IDC)
	Insulation Piecing Terminal (SMIPT)
	Binding Post/Screw Terminal
	Wire Crimp Terminal
	Box Contact

<b>Mounting Type</b>
xxxx (SM) - Surface Mount
xxxx (TH) - Thru-Hole



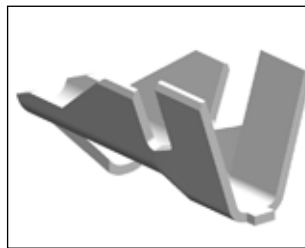
### Surface Mount Insulation Piercing Terminal (SMIPT - Examples)



### Box (Examples)



### Wire Crimp (Examples)



### Insulation Displacement Connector (IDC - Examples)



### Binding Post (Examples)

