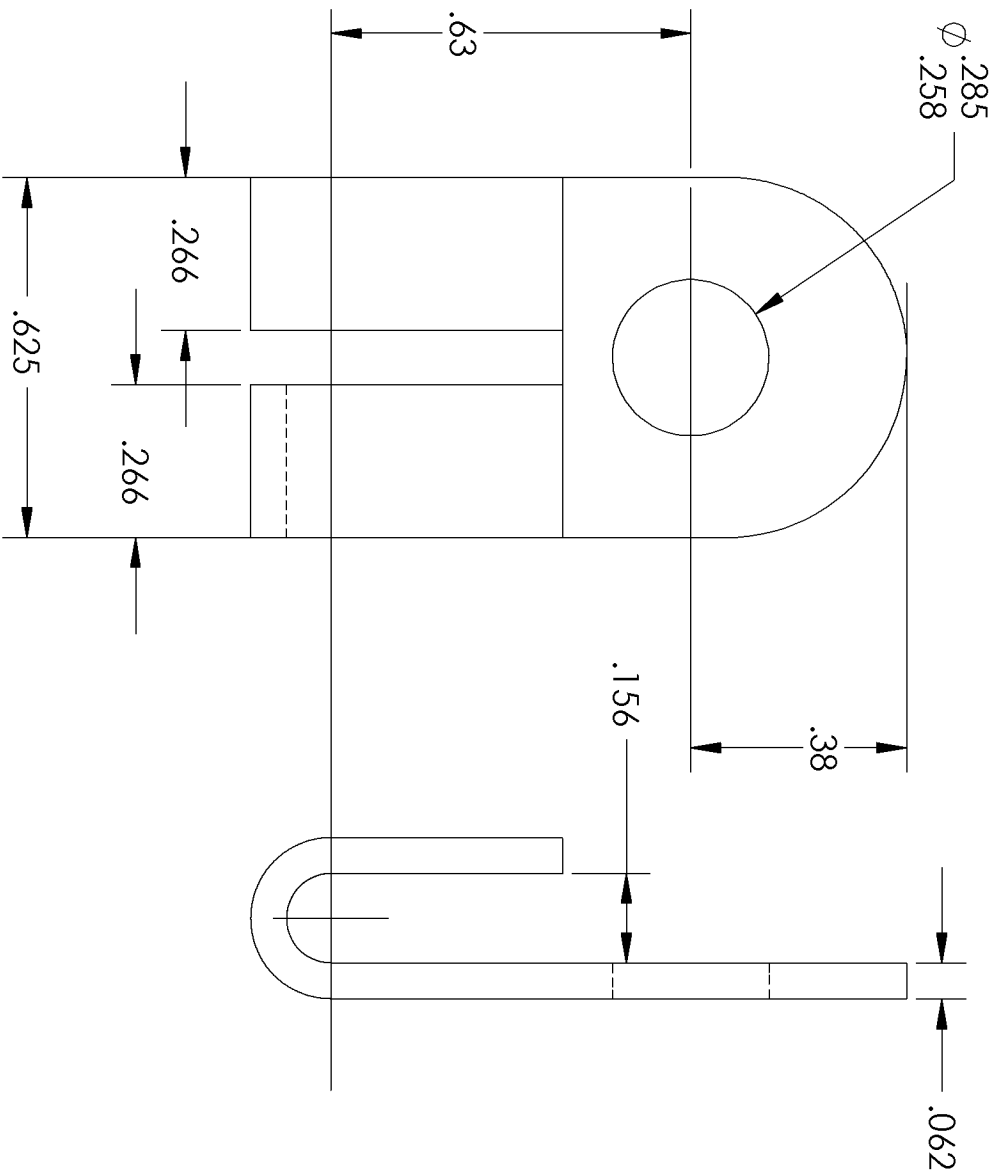


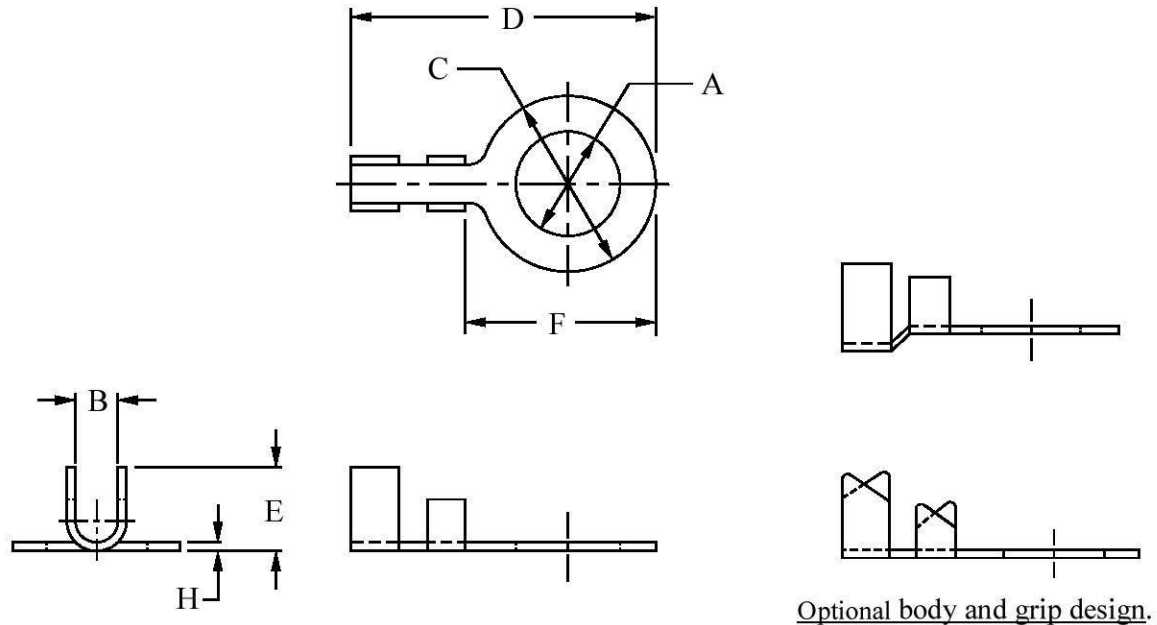
NOTES:

1. MATERIAL:
COPPER, ANNEALED PER QQ-C-576
2. FINISH:
HOT TIN DIP OR ELECTRODEPOSITED
TIN ALL OVER. MIN THK .0005 INCHES.
3. PARTS SHALL BE FREE OF ANY BURRS
OR SHARP EDGES.



PROPRIETARY AND CONFIDENTIAL
THE INFORMATION CONTAINED IN THIS
DRAWING IS THE SOLE PROPERTY OF
ORLOTRONICS CORPORATION. ANY
REPRODUCTION IN PART OR AS A WHOLE
WITHOUT THE WRITTEN PERMISSION OF
ORLOTRONICS CORPORATION IS
PROHIBITED.

| | | | | | | | | |
|-------------|-----------|---|--|--------------|------|---------|-------------------------|--|
| | | DIMENSIONS ARE IN INCHES TOLERANCES: THREE PLACE DECIMAL ± .015 | | DRAWN | NAME | DATE | Orlotronics Corporation | |
| | | | | CHECKED | RS | 8/17/16 | | |
| | | | | ENG APPR. | | | | |
| | | | | MFG APPR. | | | | |
| | | | | Q.A. | | | | |
| | | MATERIAL QQ-C-576 | | COMMENTS: | | | TERMINAL | |
| NEXT ASSY | | FINISH | | SEE NOTES | | | | |
| USED ON | | DO NOT SCALE DRAWING | | | | | | |
| APPLICATION | | | | | | | | |
| | | | | | | | | |
| SIZE | DWG. NO. | WEIGHT: | | SHEET 1 OF 1 | | REV. | | |
| A | MS35434-7 | | | | | | | |

FIGURE 2. Terminal dimensions for -30 through -43.TABLE II. Dash numbers and dimensions for -30 through -43.

| Dash no. | Wire size AWG ¹ nominal | Stud size | A | | B | C | D | E | F | H |
|----------|------------------------------------|-----------|-------|-------|-------|--------|-------|------|-------|-------|
| | | | Min. | Max. | | | | | | |
| 30 | 10 | 6 | 0.141 | 0.153 | 1/8 | 9/32 | 21/32 | 7/32 | 21/64 | 0.032 |
| 31 | | | | | | | | | | |
| 32 | 8 | 8 | 0.167 | 0.179 | 5/32 | 11/32 | 1 | 9/32 | 15/32 | 0.025 |
| 33 | | 10 | 0.193 | 0.205 | | | | | | |
| 34 | | 3/8 | 0.383 | 0.410 | 11/16 | 1 7/32 | | | | |

REQUIREMENTS:

1. Material: Electrolytic copper strip or sheet alloy C11000, temper O60 in accordance with ASTM B 152/B 152M (DoD adopted).

2. Finish: Tinned; electrodeposited over entire surface in accordance with ASTM B 545 (DoD adopted). Minimum thickness 0.0005 inches all over.

NOTES:

1. Dimensions are in inches.
2. Unless otherwise specified, tolerance is $\pm 1/64$.
3. Remove all burrs.
4. Referenced documents of issue in effect on date of invitation for bids shall apply.
5. In the event of a conflict between the text of this document and the references cited herein, the text of this document shall take precedence.