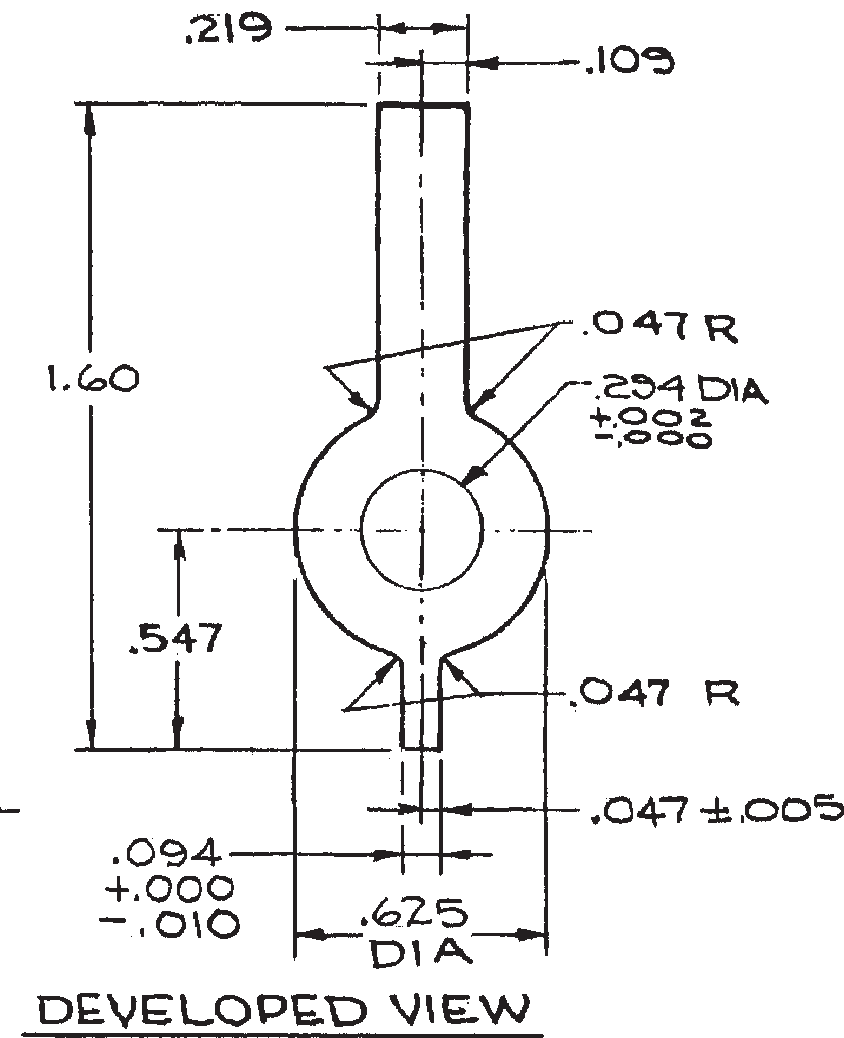
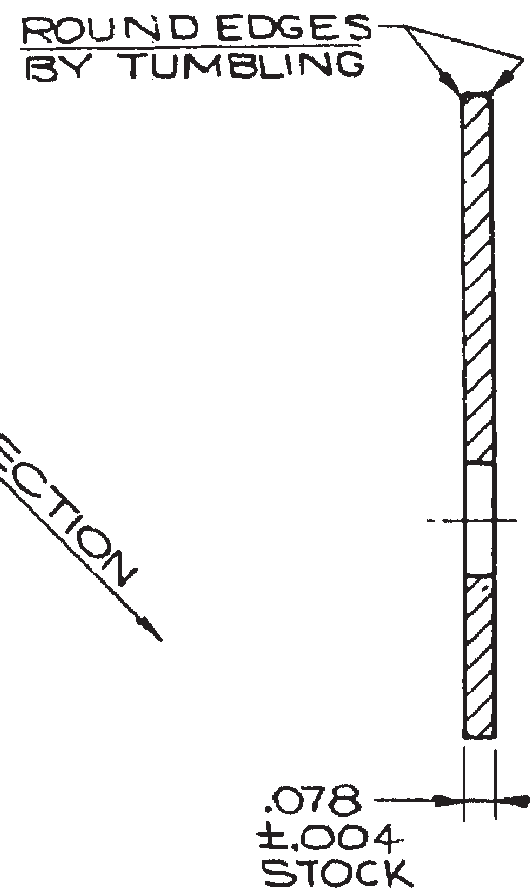
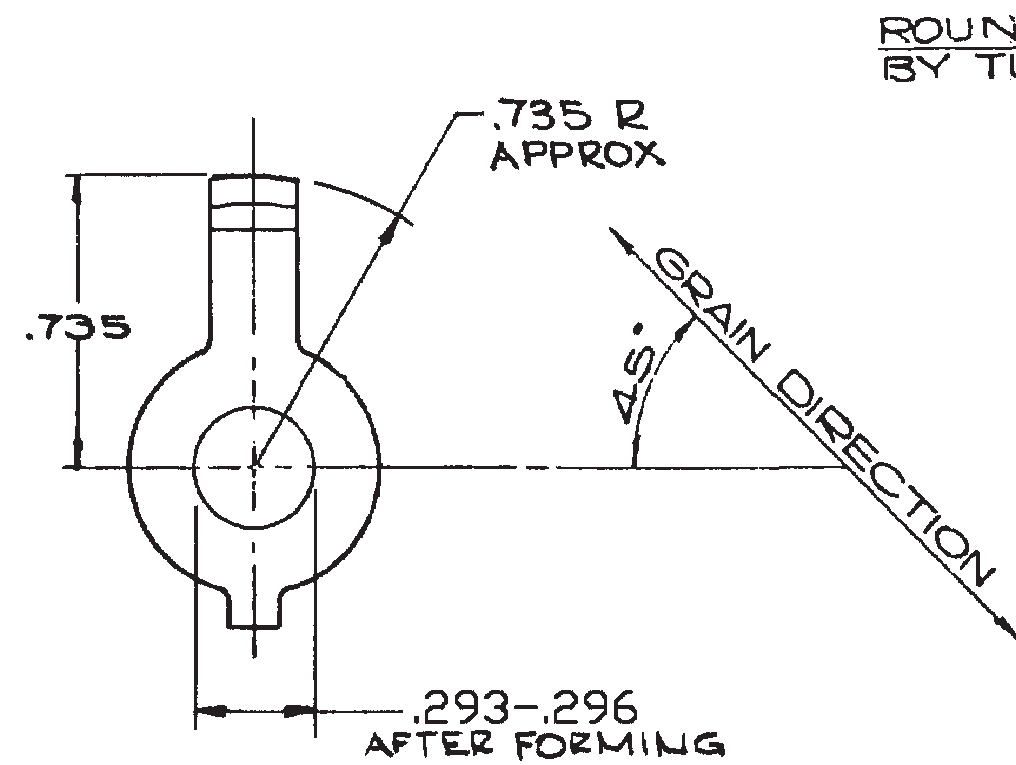
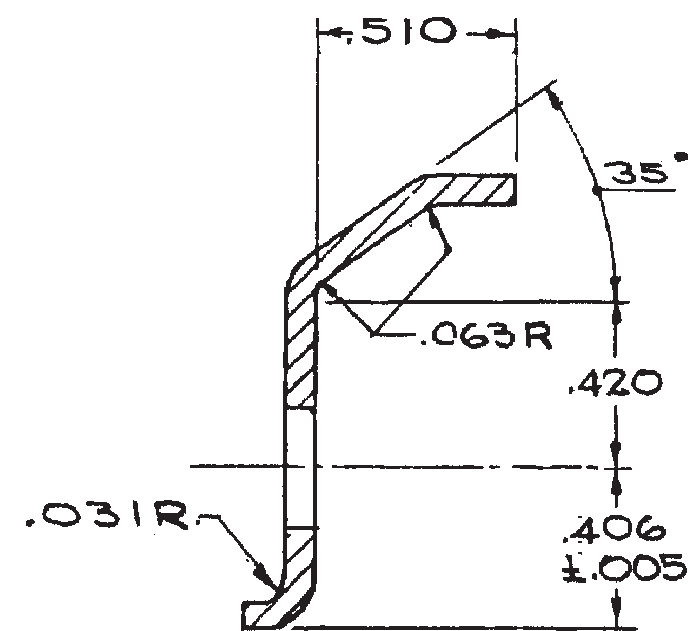


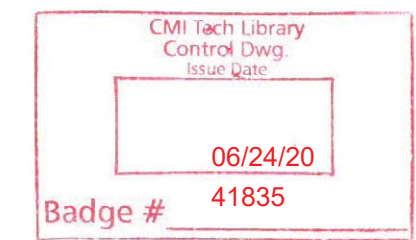
NOTES:

- 1) IDENTIFY WITH 10-50748 AND LATEST CHANGE LETTER PER AS478-37.
- 2) STRESS RELIEVE AT 350°F FOR 15 MINUTES PRIOR TO FORMING (G2)
- 3) MATERIAL: PURE HARD TEMPER COPPER ALLOY 110, COLD ROLLED FINISH, TENSILE STRENGTH 43,000-52,000 PSI ROCKWELL HARDNESS 30T54-30T62 PER ASTM B152. HARDNESS REQUIREMENT APPLIES TO FINISHED PART (G1)

REVISIONS				
ZONE	AUTHORITY	LET	ALTERATION RECORD	DATE
	SCR050019	G	REDRAWN WAS "B" SIZE DWG WITH THE FOLLOWING CHANGES: 1) MATERIAL WAS COPPER 9-1184 2) STRESS RELIEVE AT 350°F WAS 450°F	1/10/05



VERIFY REVISION LEVEL 60 DAYS FROM ISSUE DATE



10-50748

G

ECCN 9E991  
HTSUS 4906.00.0000

The information contained herein is controlled by the U.S. government and authorized for export only to the country of ultimate destination for use by the ultimate consignee or end-user(s) herein identified. They may not be retransmitted, or otherwise disposed of, to any other country or to any person other than the authorized ultimate consignee or end-user(s), either in their original form or after being incorporated into other items, without first obtaining approval from the U.S. government or as otherwise authorized by U.S. law and regulations.

AUTOCAD VERSION 13

UNLESS OTHERWISE SPECIFIED:  SURFACE ROUGHNESS NOT TO EXCEED 125 Ra ON FINISHED SURFACES CORNERS TO HAVE FILLET .005-.015 R SHARP EDGES TO BE BROKEN .005-.015 ANGLES MAY VARY ±2°  FINISHED DIMENSIONS MAY VARY: .X ±.1 .XX ±.03 .XXX ±.010  INTERPRET DIMENSIONS AND TOLERANCES PER ANSI Y14.5, MMC APPLIES	NOTICE PART NUMBERS APPEARING ON THIS PRINT ARE TRADEMARKS OF TELEDYNE CONTINENTAL MOTORS	DTR SMITH DATE 10/22/45	TELEDYNE CONTINENTAL MOTORS, INC. A TELEDYNE TECHNOLOGIES COMPANY		
	PROPRIETARY NOTICE THE INFORMATION CONTAINED IN OR DISCLOSED BY THIS DOCUMENT IS CONSIDERED PROPRIETARY BY TELEDYNE CONTINENTAL MOTORS. THIS DOCUMENT AND THE ITEMS AND INFORMATION CONTAINED OR DISCLOSED HEREIN SHALL NOT BE USED, COPIED OR REPRODUCED IN WHOLE OR IN PART, NOR SHALL THE CONTENTS BE REVEALED IN ANY MANNER TO ANY PERSON UNLESS WRITTEN PERMISSION IS OBTAINED FROM TELEDYNE CONTINENTAL MOTORS. ©2004, TELEDYNE INDUSTRIES, INC.	MATERIAL  SEE NOTE 3	TITLE  ELECTRODE, DISTRIBUTOR		
		PATT NO.	SIZE C	DRAWING NO. 10-50748	REV LTR G
		REFERENCE	SCALE 2/1	SHEET 1 OF 1	