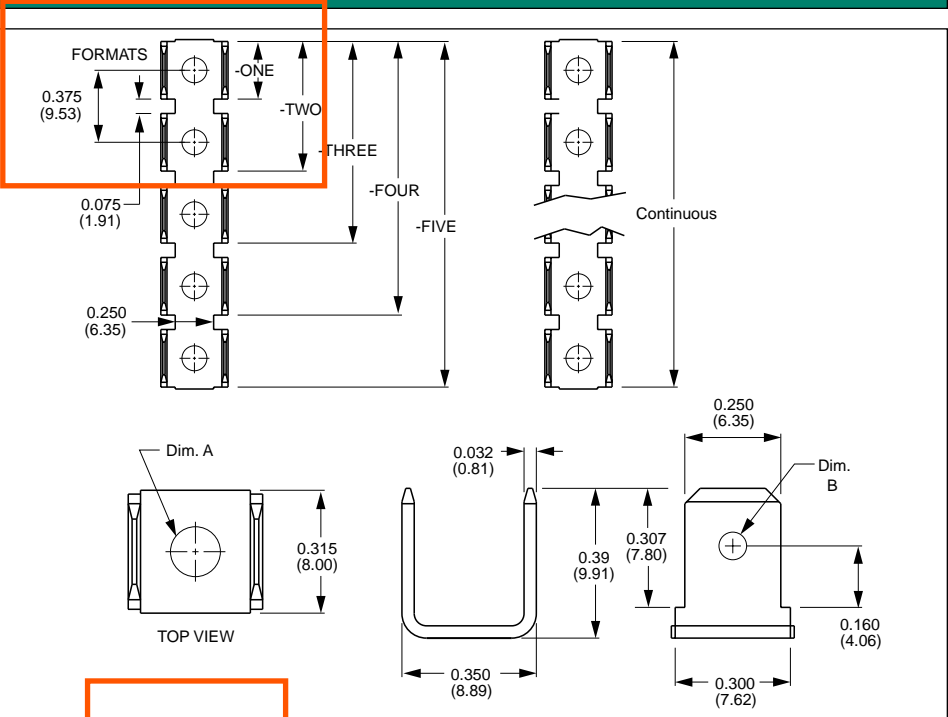
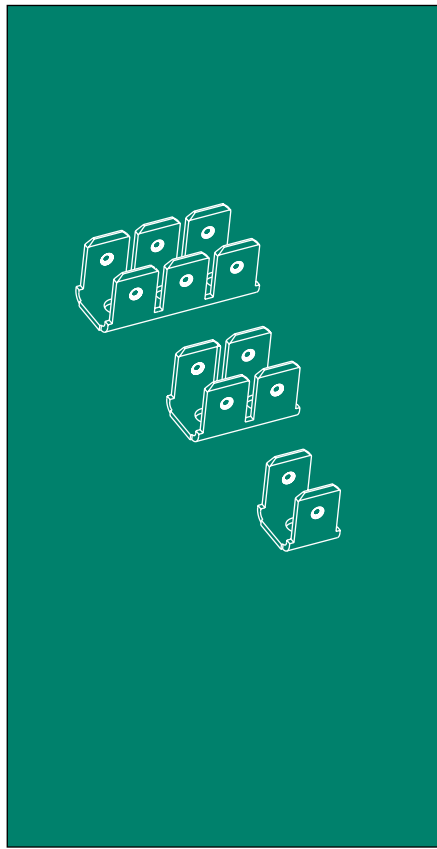
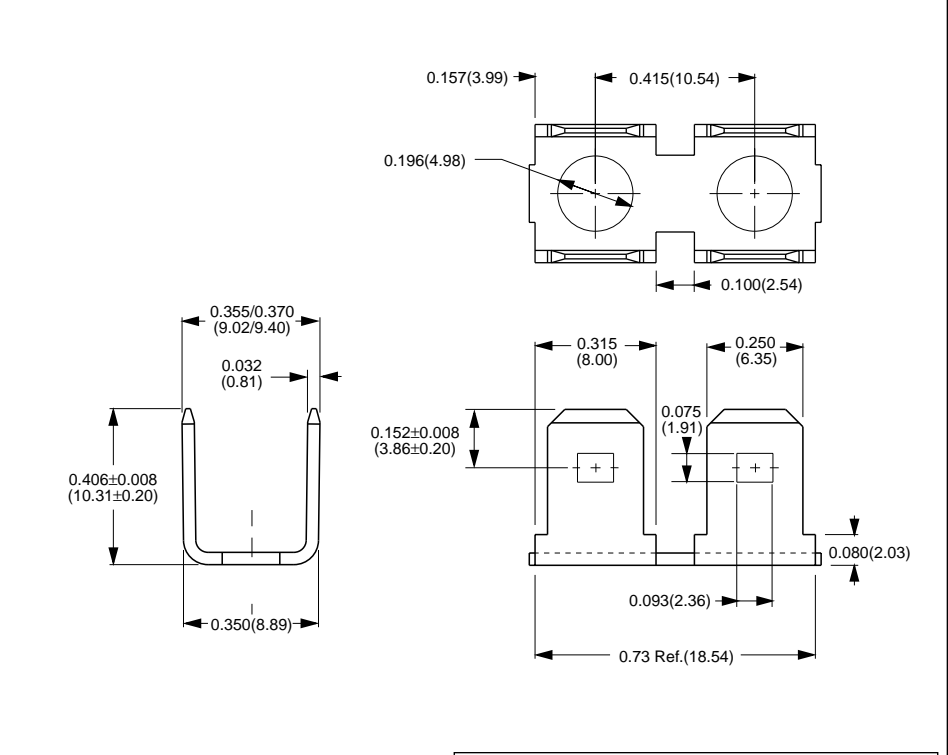


0.250" (6.35mm) Quick Disconnect Terminals



Part Number	Part Format	Material Type	Finish Code	Inventory Type	Dim. 'A'	Dim. 'B'
929-130	-XXX	Brass	8	Stock	0.130" (3.30mm)	0.065"/0.080" (1.65mm/2.03mm) Dimple

¹Select Loose Piece Format: ONE, TWO, THREE (Special), FOUR (Special), FIVE (Special), or SEVEN (Special).
¹Select Continuous Format: Consult Factory for Multiple Sticks or Continuous Reels.



Part Number	Material Type	Finish Code	Inventory Type
918-196	Brass	5	Stock

Providing innovative solutions to complex interconnection requirements for over 80 years

[HOME](#)[ABOUT US](#)[CONNECTORS](#)[HARDWARE](#)[EQUIPMENT](#)[CUSTOM SOLUTIONS](#)**Hardware**

- Quick Disconnect Terminals
- Crimp Terminals
- Eyelet Terminals
- Receptacles
- Fuse Clip Terminals
- Spring Clips
- Screw Terminals
- Ring Terminals
- Solder Terminals
- Solder Lug Terminals
- Lockwashers
- Jumper Terminals
- Angle Brackets
- Cable Clamps
- Screws and Wire Clamps
- Strip Terminals
- Plating Specifications

Plating Specifications

Zierick's standard finish is a minimum of 150 millionths of 100% tin over a minimum of 100 millionths copper. If there is no dash after the Part Number, the finish is as stated in the product description. Finishes other than standard are explained in the table below.

Finish Description

Finish	Description
0	0.000150" (0.0038mm) 100% Tin over 0.000100" (0.0025mm) Copper
1	0.000050" (0.0013mm) Hot Solder Dip (60% Tin, 40% Lead)
2	0.000050" (0.0013mm) Hot Tin Dip (100% Tin)
3	0.000150" (0.0038mm) Bright Tin over 0.000100" (0.0025mm) Copper
4	0.000100" (0.0025mm) Nickel
5	Cleaned and Polished
6	0.000150" (0.0038mm) 95/5 Tin/Lead over 0.000100" (0.0025mm) Copper
7	0.000100" (0.0025mm) Bright Tin
8	0.000100" (0.0025mm) Tin
9	No finish (Bare Base Metal)
11	Pre-Finished 100% Hot Tin Dip (consult factory for thickness). Material edges will be bare.
12	Pre-Finished 0.000150" (0.0038mm) 95/5 Tin/Lead over 0.000100" (0.0025mm) Copper. Material edges will be bare.
13	Pre-Finished 0.000150" (0.0038mm) 100% Tin over 0.000100" (0.0025mm) Copper. Material edges will be bare.
14	0.000005" (0.00013mm) Gold over 0.000050" (0.0013mm) Nickel
19	0.00003" (0.00076mm) Gold over 0.000050" Min (0.0013mm) Nickel
MS	Parts made to military standards have the prefix MS before the part number and are plated to the military standard of 0.0005" (0.0127mm) Min 100% Tin over 0.000150" (0.0038mm) Copper
SP	Special finish (consult factory)

Solderability: In Accordance with ANSI/J-STD-002, category 3, test method appropriate to the test sample.

This table does not represent all available finish types.
Finishes other than the standard will be special orders; pricing and availability may vary.
Please consult factory.

[Home](#) | [About Us](#) | [Connectors](#) | [Hardware](#) | [Equipment](#) | [Custom Solutions](#)

1-800-882-8020 ©2007 Zierick Manufacturing Corporation

Zierick Manufacturing RoHS / REACH Compliance Certification

Zierick Manufacturing Corporation certifies that

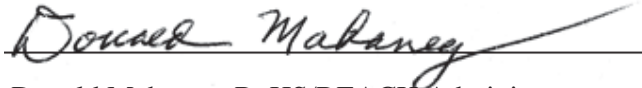
Part Number 929-130

does not contain any intentional additions of cadmium (Cd), mercury (Hg), lead (Pb), hexavalent chromium, polybrominated biphenyls (PBB), BIS (2-Ethylhexyl) phthalate (DEHP), Benzyl butyl phthalate (BBP), Dibutyl phthalate (DPB), Diisobutyl phthalate (DIBP) or polybrominated diphenyl ethers (PBDE), or does not exceed the allowable amounts permitted by the most current annex of the RoHS directive with no exceptions.

Therefore, ZMC's parts are compliant with the European Directive (2002/95/EC) and RoHS II (2011/65/EU), and also the current 2016 China's RoHS 2 regulations.

None of our connectors contain any of the 181 SVHC listed in REACH's latest candidate list of January 2018 on Annex XIV Authorization list or Annex XVII Restriction list.

Signed



Date 21 March 2018

Donald Mahaney, RoHS/REACH Administrator