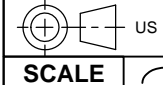
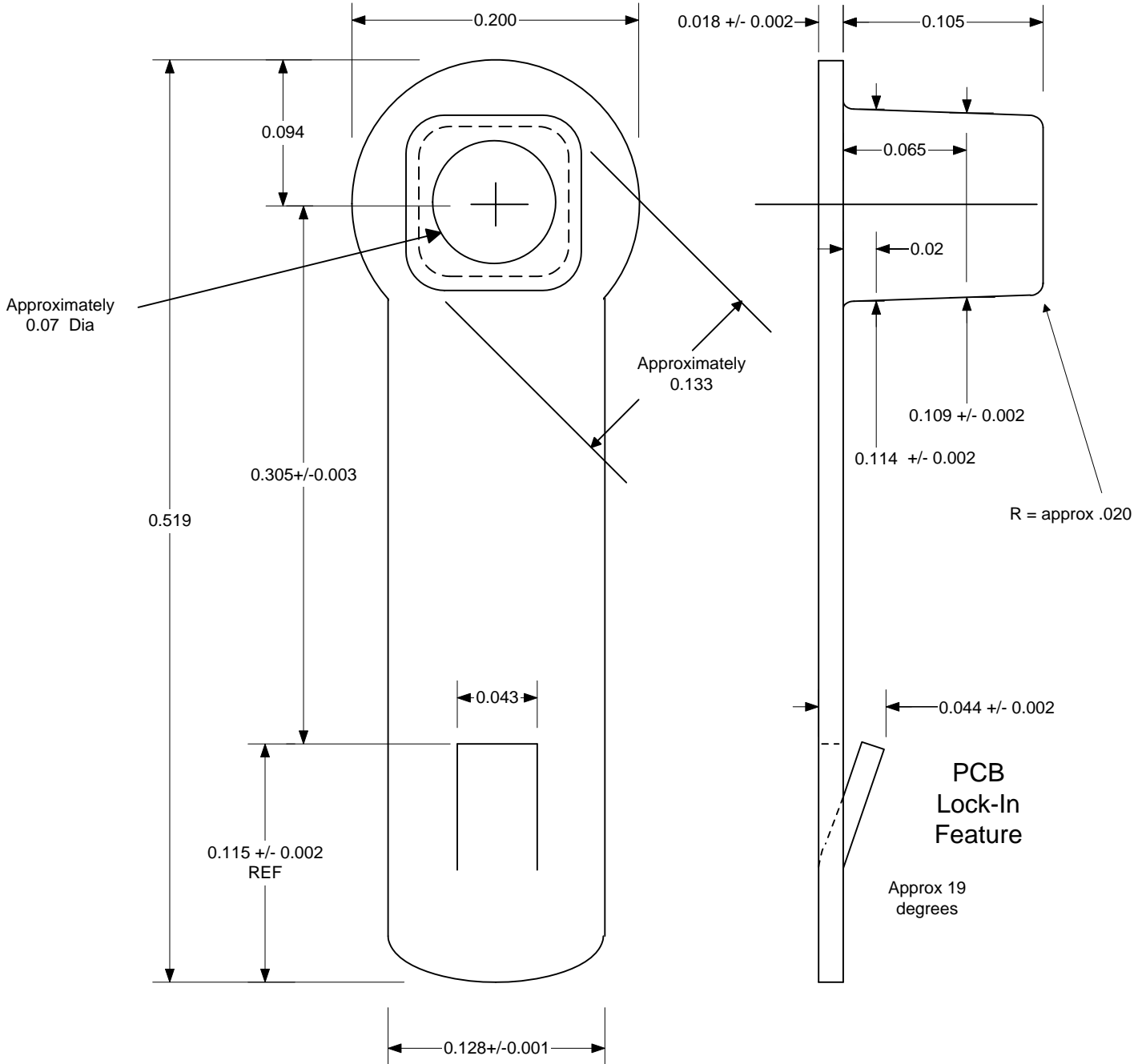


REVISIONS				DWN	DRL	<b>JEROME INDUSTRIES</b>  <b>L Heatsink Solder Lug with Lock-in Feature</b>	
LTR	DESCRIPTION	DATE	INIT	DATE	12-16-2009		
A	0.133" dimension added. Greater radius shown on box corners, similar to Zierick 421.	Mar 23 2010	DRL	CKD			
B	0.200 width dimension was previously 0.188. CDA2600 material was removed, it is too soft, no springback action after passing thru 0.040" wide PCB slot.	May 7 2010	DRL	DATE			<b>746-0101C</b>  <b>SHEET 1 OF 1</b>
C	1) Material spec changed to 1/2 Hard CDA26800 (same as C2680). 2) Lock-in tab bending amount and dimension changed to 0.044" +/- 0.002" overall thickness. Angle changed to approx 19 degrees.	June 4 2010	DRL	TOLERANCES			
				.XX +/- .010			
				.XXX +/- .005			

ALL DIMENSIONS IN INCHES

X:\DRAWINGS\746 SOLDER LUGS\746-0101C L case.vsd



**Material:** 1/2 Hard CDA26800 (C2680), 0.016 - 0.019 thickness

**Plating:** 0.00015 100% Matte Tin over 0.00010 Copper