

SUGGESTED SOURCE(S) OF SUPPLY:
 ZIERICK MANUFACTURING CORPORATION
 RADIO CIRCLE
 MT KISCO, N.Y. 10549
 CAGE CODE 79963

COPYRIGHT © 1973
 SIMMONDS PRECISION PRODUCTS, INC.

THESE COMMODITIES, TECHNOLOGY, OR SOFTWARE ARE
 SUBJECT TO THE EXPORT CONTROLS IN ACCORDANCE
 WITH THE EXPORT ADMINISTRATION REGULATIONS.
 DIVERSION CONTRARY TO U.S. LAW IS PROHIBITED.

IDENTIFICATION OF THE "SUGGESTED SOURCE(S) OF SUPPLY
 HEREON IS NOT TO BE CONSTRUED AS A GUARANTEE OF
 PRESENT OR CONTINUED AVAILABILITY AS A SOURCE OF
 SUPPLY FOR THE ITEM(S).

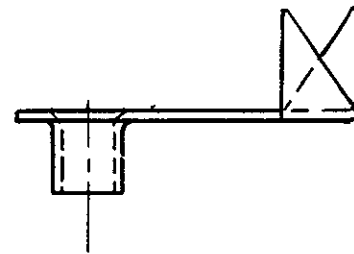
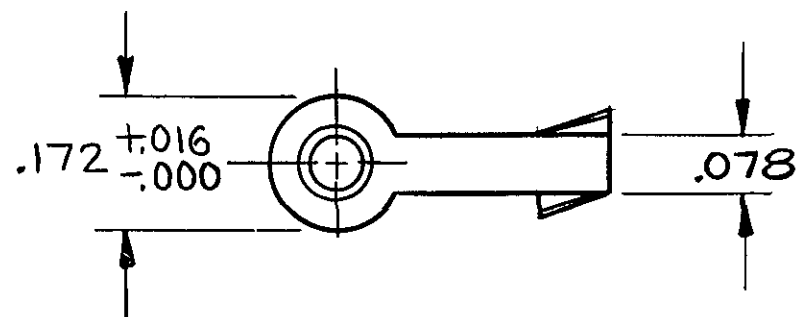


FIG 2
 DIMS IDENTICAL
 TO FIG 1

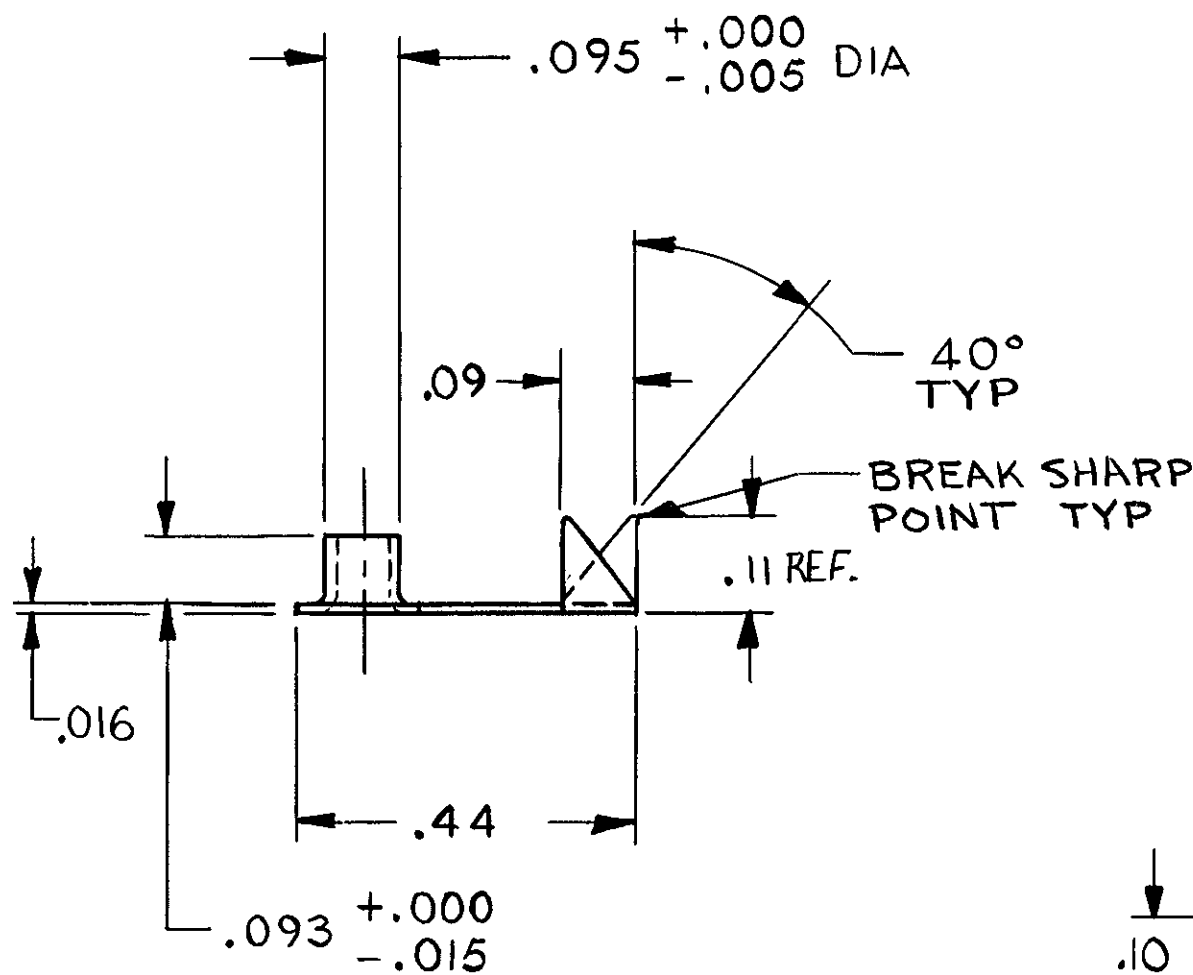


FIG 1

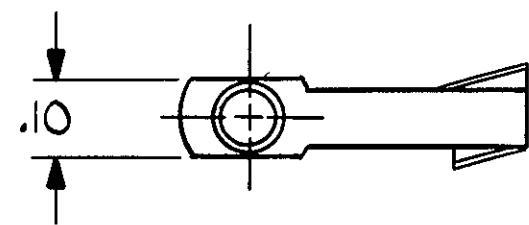


FIG 3
 TOP VIEW SHOWN
 SIDE VIEW LIKE FIG 2

REVISIONS			
LTR	DESCRIPTION	DATE	APPROVED
J	ECO 14037, CL II (1) REV NOTE 2 D-0389-625, D1411-1131-II, D-1532-052/ PMA-0075	88/11/11	JPC/SD
K	ECO 15887, CL II (1) REV NOTE 2 D-0389-625B	88/11/11	JPC/SD
L	ECO 16573, CL II (1) REV PER ECO D-0389-650, SCP-8408, D-1411-1246-II, PMA-0202, 89-044, CIF-89-196, D-1532-066, D-1483-79	89/1/5	JPC/SD
M	ECO 18499, CL II (1) .10 DIM WAS .100 (2) REV NOTE 2 (3) ADDED SUGGESTED SOURCE OF SUPPLY NOTE	90/10/9	JD/ERH
N	ECO E00026 (1) ADDED NOTE 3 (2) ADDED -5 TO TABLE	97/4/11	HJB/
P	ECO E08726, REV NOTE 2, DEL REFLOWED	03-0078	03-01-21
SEE DOCUMENT MANAGEMENT SYSTEM FOR APPROVAL STATUS			
R	ECO-11219	PSP P-4590	11/02/08 ON FILE

DASH NO	FIG	MATL	FINISH
NONE	1	ASTM B36 CU ALLOY 260 ANNEALED	2
1	1	QQ-N-281 CLASS B R MONEL	
2	2	ASTM B36 CU ALLOY 260 ANNEALED	
3	1	ASTM B36 CU ALLOY 260 ANNEALED	
4	3	ASTM B36 CU ALLOY 260 ANNEALED	2
5	2	ASTM B36 CU ALLOY 260 ANNEALED	3

THIS DRAWING DEPICTS HARDNESS CRITICAL ITEMS (HCI) OR
 HARDNESS CRITICAL PROCESSES (HCP). ALL CHANGES TO OR
 PROPOSED SUBSTITUTIONS OF HCIs OR HCPs MUST BE
 EVALUATED FOR HARDNESS IMPACTS BY THE ENGINEERING
 ACTIVITY RESPONSIBLE FOR SURVIVABILITY.
 ALL ITEMS NOT ANNOTATED **HCIM** OR **HCH** IN THE FIELD
 OF DRAWING ARE CLASSIFIED CATEGORY 2 (**HC2**)

TABULATED DRAWING

SPECIFICATION CONTROL DRAWING

CONTRACT NO. F34601-82-C-2445

DIMS IN PARENTHESES ARE IN MILLIMETERS	
TOLERANCE CONVERSION	
INCH	MM
± .005	± 0.13
± .010	± 0.25
± .030	± 0.8

ITEM NO.	QTY REQ	CODE IDENT	DWG SIZE	PART OR IDENTIFYING NO	NOMENCLATURE OR DESCRIPTION	SPECIFICATION OR MATERIAL
PARTS LIST						
CONTRACT NO F33657-70-C-0800				SIMMONDS PRECISION PRODUCTS INC. VERGENNES, VERMONT		
DRAWN C. Cadmus		DATE 4-2-73		TERMINAL, LUG		
CHECKED S. Denny		DATE 4-13-73				
APPROVED M. Grant		DATE 4/13/73				
DASH NO		NEXT ASSY		USED ON		FINISH
APPLICATION						
SIZE C		CODE IDENT NO 89305		478812 -		
SCALE 4/1		WEIGHT		SHEET 1 OF 1		

- 3 SILVER PLATE PER QQ-S-365
.0003 TO .0005 INCH THICK OF HIGH
PURITY SILVER (99.9%).
- 2 SOLDER PLATE PER MIL-P-81728, Sn60-Pb40,
.0002 IN THICK, PERMISSIBLE TO TIN
.10 DIM AREA (FIGURE 3) WITH
Sn63 SOLDER.

NOTES:

1. SIMILAR TO (C) 249008.