

REVISIONS

FOR MULTI-SHEET DRAWINGS, ALL SHEETS ARE THE SAME REVISION STATUS.

REV	DESCRIPTION	DATE	APPROVED
W	INC ECO-25230. REDRAWN WITH CHANGE	SEE PDM	SEE PDM
Y	INC ECO-39775.	SEE PDM	SEE PDM
AA	SEE ECO-191999.	SEE ECO	SEE ECO
AB	SEE ECO-211129.	SEE ECO	SEE ECO

NOTES: UNLESS OTHERWISE SPECIFIED.

1. ENGINEERING DRAWING PRACTICES IN ACCORDANCE WITH ASME Y14.100.
2. IDENTIFICATION OF THE SOURCE(S) OF SUPPLY HEREON IS NOT TO BE CONSTRUED AS A GUARANTEE OF PRESENT OR CONTINUED AVAILABILITY AS A SOURCE OF SUPPLY FOR THE ITEM(S).
3. PACKAGING AND SHIPPER(S) SHALL BE IDENTIFIED WITH HONEYWELL AEROSPACE PROCUREMENT NUMBER INCLUDING THE APPLICABLE DASH NUMBER. PARTS SHALL BE IDENTIFIED WITH THE SUPPLIER IDENTIFICATION WITHOUT ALTERATION.
4. VENDOR ITEMS LISTED UNDER THE SAME PROCUREMENT NUMBER MAY BE USED INTERCHANGEABLY.
5. SOURCE(S) OF SUPPLY ARE MANDATORY FOR HONEYWELL PROCUREMENT, SUGGESTED FOR GOVERNMENT AGENCY REPROCUREMENT.
6. THIS DRAWING AND THE PARTS IDENTIFIED HEREON ARE APPLICABLE FOR USE BY ALL OF HONEYWELL AEROSPACE.
7. UNTOLERANCED DIMENSIONS ARE FOR REFERENCE ONLY.

VENDOR ITEM CONTROL DRAWING

NOT RELEASED
FOR REFERENCE ONLY
SUBJECT TO CHANGE
WITHOUT NOTICE

	SIGNATURES	DATE	Honeywell International Inc. Honeywell		
	DFT CHRISTENSEN	62-04-24	DWG TITLE TERMINAL, LUG-ELECTRIC		
	CHK RICHARDS	62-04-25			
	STDS CHRISTENSEN	62-04-26			
	APVD				
	DSGN ACTIVITY		SIZE	CAGE CODE	DWG NO.
OTHER ACTIVITY		A	99193	724-552	
			SCALE: NONE	SHEET 1 OF 8	

TABLE 1: SOURCES OF SUPPLY

① WEST COAST LOCKWASHER CO. INC. DBA WCL COMPANY DIV WEST COAST LOCK
 WASHER, CITY OF INDUSTRY, CA. CAGE CODE: 09772

② ZIERICK MFG CORP, MOUNT KISCO, NY.
 CAGE CODE: 79963

NOT RELEASED
 FOR REFERENCE ONLY
 SUBJECT TO CHANGE
 WITHOUT NOTICE

SIZE	CAGE	DWG NO.
A	99193	724-552
SCALE: NONE	REV. AB	SHEET 2

PROCUREMENT NUMBER	SUPPLIER PART NUMBER		
	①	②	
724-552-9001	TER-0086-L74-02-01-BRZ-HSD		
724-552-9002	TER-0112-L71-04-00-BRZ-HSD		
724-552-9003	TER-0138-L71-06-00-BRZ-HSD		
724-552-9006	TER-0164-L71-08-00-BRZ-HSD		
724-552-9010	TER-0112-P71-04-00-BRZ-HSD	818-120	
724-552-9011	2905-04-00		
724-552-9013	2905-06-00		
724-552-9014	TER-0164-P71-08-00-BRZ-HSD	818-169	
724-552-9017	2406-10-00*		
	2506-10-00*		
724-552-9018	2439-10-00		
724-552-9021	TER-0112-P72-04-00-BRZ-HSD		
724-552-9023	TER-0138-P72-06-00-BRZ-HSD		
724-552-9027	2406-10-00	818-196	
724-552-9101	TER-0250-L52-14-00-BRZ-HSD		
724-552-9102		761	
724-552-9103	TER-0086-L74-02-01-BR-HSD		
724-552-9104	TER-0112-L71-04-00-BR-HSD		
724-552-9105	TER-0138-L71-06-00-BR-HSD		
724-552-9106	TER-0164-L71-08-00-BR-HSD		
724-552-9108	2218-14-00		
724-552-9110	TER-0112-P71-04-00-BR-HSD	698-120	
724-552-9111	TER-0164-P71-08-00-BR-HSD	698-169	
724-552-9112	2506-10-00	698-196	
724-552-9113	2539-10-00		
724-552-9117	TER-0112-P72-04-00-BR-HSD		
724-552-9118	TER-0138-P72-06-00-BR-HSD		
724-552-9201	TER-0112-P72-04-00-STL-HSD		
724-552-9203	TER-0138-P72-06-00-STL-HSD		
724-552-9301	TER-0112-P71-04-00-CU-ET15		
724-552-9303	TER-0138-P72-06-00-CU-ET15		

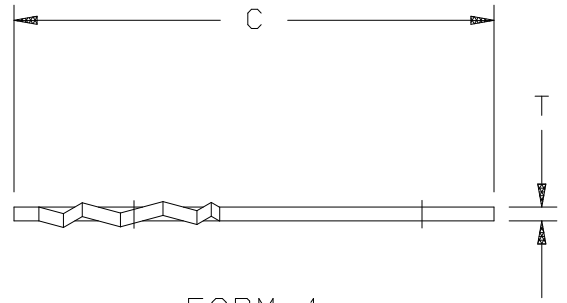
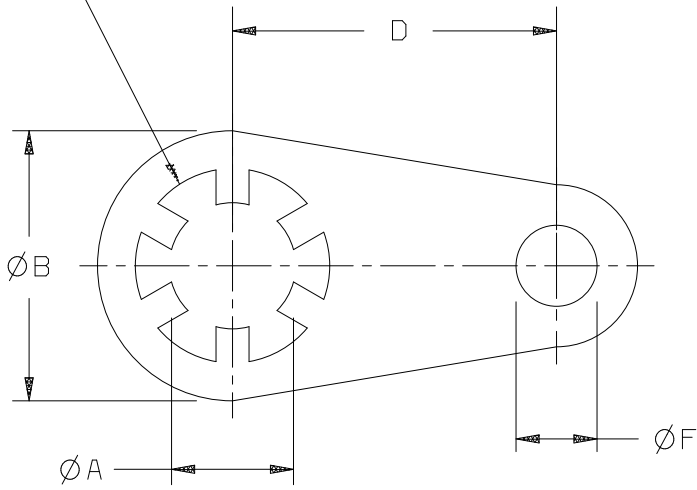
* ALTERNATE VENDOR PART

ABBREVIATIONS: BRZ=BRONZE, BR=BRASS, STL=STEEL, CU=COPPER
 THE FOLLOWING DASH NUMBERS ARE INACTIVE FOR NEW DESIGN AND
 PROCUREMENT AFTER 94-05-05 AND ARE SUPERSEDED AS INDICATED:

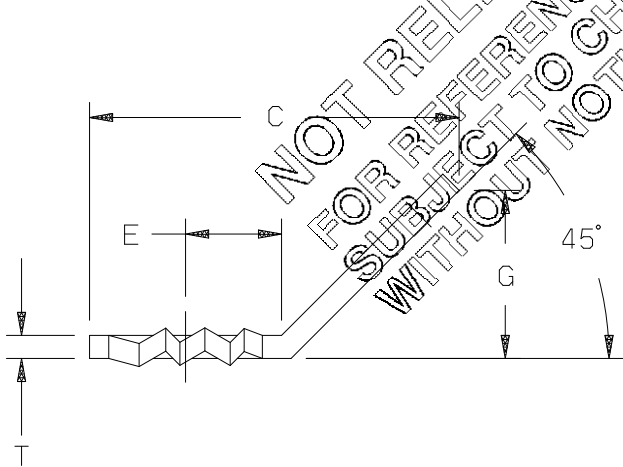
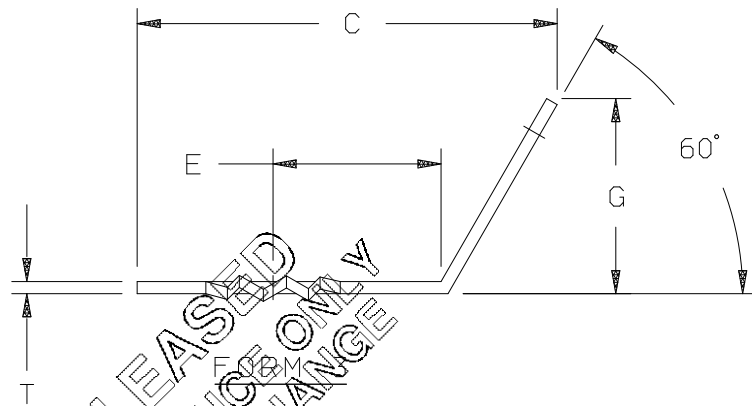
- 9011 SUPERSEDED BY -9021 (BRZ), -9117 (BR), -9201 (STL), OR -9301 (CU).
- 9013 SUPERSEDED BY -9023 (BRZ), -9118 (BR), -9203 (STL), OR -9303 (CU).
- 9017 SUPERSEDED BY -9027 (BRZ), OR -9112 (BR).

SIZE	CAGE	DWG NO.
A	99193	724-552
SCALE: NONE	REV. AB	SHEET 3

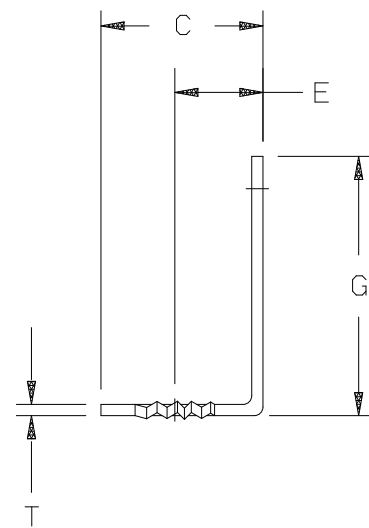
LOCKING OR PLAIN INDICATED BY P/N



FORM 1



FORM 2



FORM 4

NOT RELEASED
FOR REFERENCE ONLY
SUBJECT TO CHANGE
WITHOUT NOTICE

SIZE	CAGE	DWG NO.
A	99193	724-552
SCALE: NONE	REV. AB	SHEET 4

PROCUREMENT NUMBER	SCREW SIZE	FORM	A HOLE DIA	B	C	D	E	F	G	T MATL THK
724-552-9001	2	4	.095 .089	.185 .175	.188	--	.107 .097	.078	.305 .295	.012
724-552-9002	4	1	.123 .116	.312	.625	.375	--	.094	--	.018
724-552-9003	6	1	.150 .142	.312	.625	.375	--	.094	--	.018
724-552-9006	8	1	.176 .168	.312	.625	.375	--	.094	--	.018

THE ABOVE TERMINALS HAVE LOCKING SCREW HOLES.
MATERIAL: BRONZE PER QQ-B-750.
FINISH: HOT SOLDER DIP.

PROCUREMENT NUMBER	SCREW SIZE	FORM	A HOLE DIA	B	C	D	E	F	G	T MATL THK
724-552-9010	4	1	.123 .116	.312	.625	.375	--	.094	--	.018
724-552-9011	4	2	.123 .116	.312	.625	.375	.125	.090 .085	.219	.030
724-552-9013	6	2	.150 .142	.312	.625	.375	.125	.090 .085	.219	.030
724-552-9014	8	1	.176 .168	.312	.625	.375	--	.094	--	.018
724-552-9017	10	1	.204 .195	.313	.625	.375	--	.094	--	.018
724-552-9018	10	3	.204 .195	.313	.578	--	.250	.078	.281	.018
724-552-9021	4	2	.123 .116	.250	.453	--	.125	.090 .085	.219	.030
724-552-9023	6	2	.150 .142	.250	.453	--	.125	.090 .085	.219	.030
724-552-9027	10	1	.204 .195	.313	.625	.375	--	.094	--	.018

THE ABOVE TERMINALS HAVE PLAIN SCREW HOLES.
MATERIAL: BRONZE PER QQ-B-750.
FINISH: HOT SOLDER DIP.

SIZE	CAGE	DWG NO.
A	99193	724-552
SCALE: NONE	REV. AB	SHEET 5

PROCUREMENT NUMBER	SCREW SIZE	FORM	A HOLE DIA	B	C	D	E	F	G	T MATL THK
724-552-9103	2	4	.095 .089	.185 .175	.188	--	.107 .097	.078	.305 .295	.012
724-552-9104	4	1	.123 .116	.312	.625	.375	--	.094	--	.018
724-552-9105	6	1	.150 .142	.312	.625	.375	--	.094	--	.018
724-552-9106	8	1	.176 .168	.312	.625	.375	--	.094	--	.018

THE ABOVE TERMINALS HAVE LOCKING SCREW HOLES.
MATERIAL: BRASS PER QQ-B-613.
FINISH: HOT SOLDER DIP.

PROCUREMENT NUMBER	SCREW SIZE	FORM	A HOLE DIA	B	C	D	E	F	G	T MATL THK
724-552-9110	4	1	.123 .116	.312	.625	.375	--	.094	--	.018
724-552-9111	8	1	.176 .168	.312	.625	.375	--	.094	--	.018
724-552-9112	10	1	.204 .195	.312	.625	.375	--	.094	--	.018
724-552-9113	10	3	.204 .195	.312	.625	.375	--	.250 .078	.281	.018

THE ABOVE TERMINALS HAVE PLAIN SCREW HOLES.
MATERIAL: BRASS PER QQ-B-613.
FINISH: HOT SOLDER DIP.

PROCUREMENT NUMBER	SCREW SIZE	FORM	A HOLE DIA	B	C	D	E	F	G	T MATL THK
724-552-9117	4	2	.123 .116	.250	.453	--	.125	.090 .085	.219	.030
724-552-9118	6	2	.150 .142	.250	.453	--	.125	.090 .085	.219	.030

THE ABOVE TERMINALS HAVE PLAIN SCREW HOLES.
MATERIAL: BRASS PER QQ-B-613.
FINISH: ELECTRO TIN, .00015 THICK.

SIZE	CAGE	DWG NO.
A	99193	724-552
SCALE: NONE	REV. AB	SHEET 6

PROCUREMENT NUMBER	SCREW SIZE	FORM	A HOLE DIA	B	C	D	E	F	G	T MATL THK
724-552-9201	4	2	.123 .116	.250	.453	--	.125	.090 .085	.219	.030
724-552-9203	6	2	.150 .142	.250	.453	--	.125	.090 .085	.219	.030

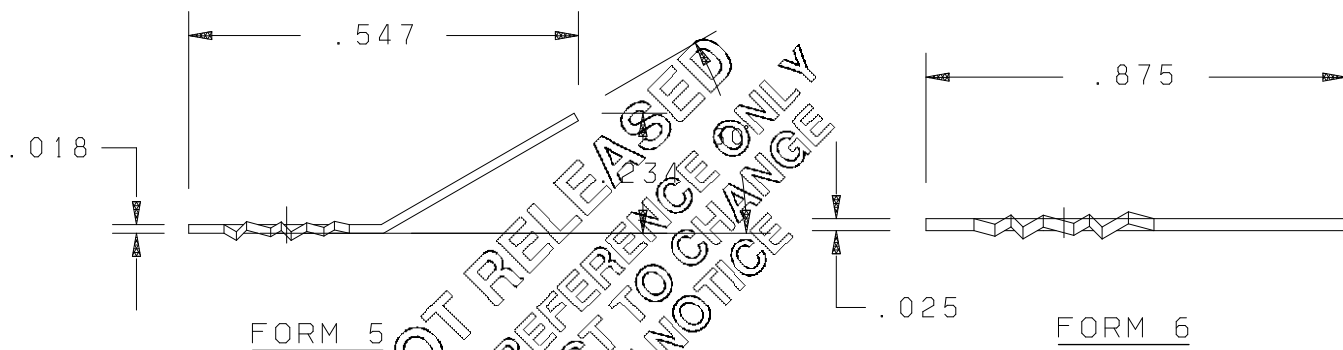
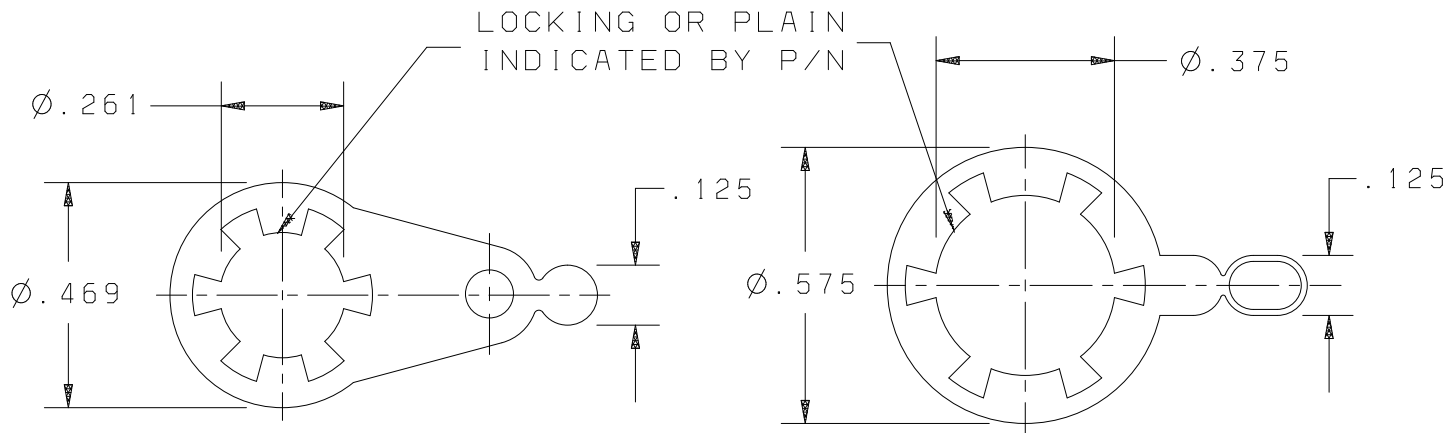
THE ABOVE TERMINALS HAVE PLAIN SCREW HOLES.
MATERIAL: STEEL PER QQ-S-698.
FINISH: HOT SOLDER DIP.

PROCUREMENT NUMBER	SCREW SIZE	FORM	A HOLE DIA	B	C	D	E	F	G	T MATL THK
724-552-9301	4	2	.123 .116	.250	.453	--	.125	.090 .085	.219	.030
724-552-9303	6	2	.150 .142	.250	.453	--	.125	.090 .085	.219	.030

THE ABOVE TERMINALS HAVE PLAIN SCREW HOLES.
MATERIAL: COPPER PER QQ-C-37
FINISH: ELECTRO TYPED .0015 THICK.

NOT RELEASED
FOR REFERENCE ONLY
SUBJECT TO CHANGE
WITHOUT NOTICE

SIZE A	CAGE 99193	DWG NO. 724-552
SCALE: NONE		REV. AB
SHEET 7		



NOT RELEASED
 FOR REFERENCE ONLY
 SUBJECT TO CHANGE
 WITHOUT NOTICE

PROCUREMENT NUMBER	FORM	MATERIAL AND FINISH
724-552-9101	5	BRONZE - HOT SOLDER DIP. LOCKING TERMINALS
724-552-9102	6	BRASS - HOT TIN. PLAIN SCREW HOLES
724-552-9108	5	BRASS PER QQ-B-613, ELECTRODEPOSITED (TYPE I) OR HOT-DIPPED (TYPE II) PER MIL-T-10727. LOCKING TERMINALS

SIZE A	CAGE 99193	DWG NO. 724-552
SCALE: NONE	REV. AB	SHEET 8