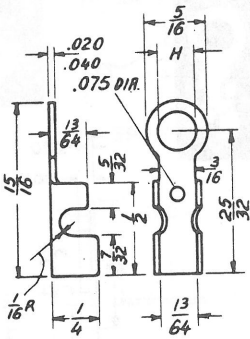
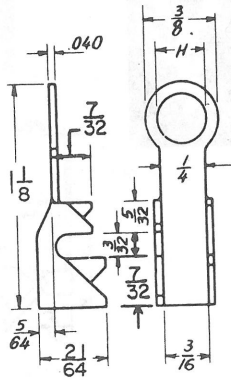


RING & SPADE TERMINALS

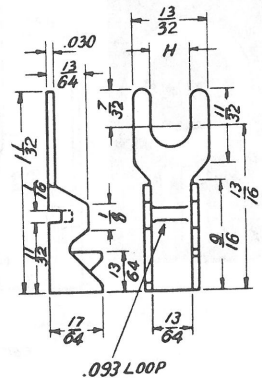


***196**
.020 COPPER, ELECTRO-TIN
Std. H. .144 .169 .196

***735**
.040 COPPER, ELECTRO-TIN
Std. H. .196
Spec. H. .144 .169

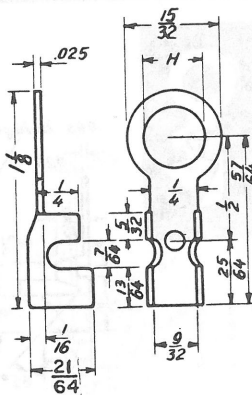


***284**
.040 COPPER, ELECTRO-TIN
Std. H. .218



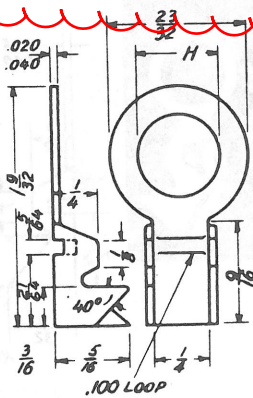
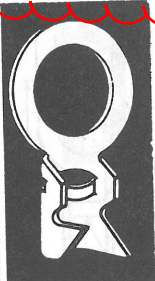
278
.030 COPPER, ELECTRO-TIN PL.
Std. H. .196

290
.030 COPPER, ELECTRO-TIN
NO LOOP



273
.025 COPPER, ELECTRO-TIN
Std. H. .281
Spec. H. .187 .196 .220

726
.040 COPPER, ELECTRO-TIN
Std. H. .281
Spec. H. .187 .196 .220



21
.020 BRASS POL.
Std. H. .406

***725**
.040 COPPER, ELECTRO-TIN OR POL.
Std. H. .406

***210**
.020 BRASS, HOT TIN
NO LOOP



***1018**
.062 STEEL ZINC PL.
for wire size 6-4
Std. H. .406

***5020**
.062 PREZINC PLATED
STEEL STRIP FORM

***1019**
.062 BRASS ELECTRO-TIN
Std. H. .406

***5025**
.062 BRASS STRIP FORM

