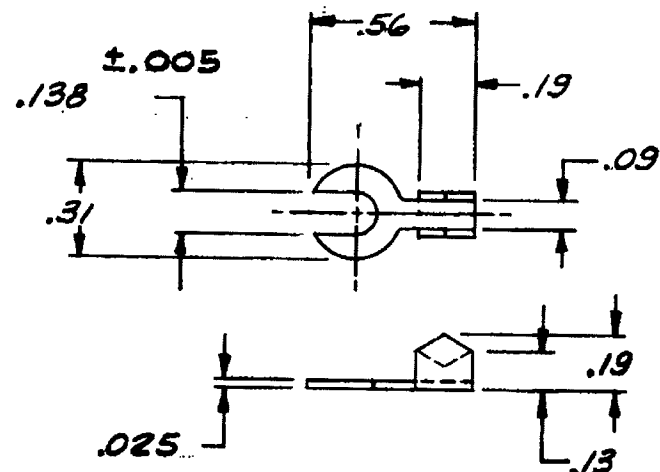


100-800-276

742-003-001

REVISIONS				
ECN	LTR	DESCRIPTION	DATE	APPROVED
1770	-	ER14B REDRAWN NO CHANGE	A.V. 1 JUL 68	<i>J.M.</i>
490	A	CHGD DIM .138 ± .005 WAS .138 ± .010, MATL WAS COPPER FINISH WAS HOT TINNED. <i>DE</i>	12/4/90	<i>[Signature]</i>



RECOMMENDED SOURCE OF SUPPLY

ZIERICK MFG CO.

NEW ROCHELLE, N.Y.

PART NO. 193

MATERIAL: COPPER ALLOY CDA 11000 PER QQ-C-576.

FINISH: ELECTRIC TIN PER MIL-T-10727, TYPE 1.

ASSOCIATED LISTS:

- NOTES:
1. REMOVE BURRS AND BREAK ALL SHARP EDGES .010 UNLESS OTHERWISE SPECIFIED.
  2. ALL MACHINED SURFACES TO HAVE RMS <sup>125</sup> PER MIL-STD-10 UNLESS OTHERWISE SPECIFIED.

		UNLESS OTHERWISE SPECIFIED DIMENSIONS ARE IN INCHES TOLERANCES ON ANGLES ± 1/2° DECIMALS XX ± .015 XXX ± .005	CONTRACT NO. DA23-204-AMC-04087	GULL AIRBORNE INSTRUMENTS, INC. 300 SHAMES DRIVE, WESTBURY, N. Y. 11590	
		MATERIAL:	DRAWN J.M. 2-28-67	TERMINAL, LUG	
		FINISH:	CHECKED T.J.S. 2-28-67		
NEXT ASSY	GEN'L USE USED ON		APPROVED T.J.S. 2-28-67	SIZE B	CODE IDENT NO. 26055
APPLICATION			APPROVED	742-003-001	
				SCALE: 2/1	WT LB SHEET 1 OF 1

S