

ISO 8015 <small>Dimensioning and measurements according to ISO 8015</small>	GENERAL TOLERANCES ISO 2768-TK			Underscored radii mm	General surface finish Ra 1.6	Weight 0.89 gf
	APPROX. STY. Options Cpl	1.2 Key 1.33 Significant 1.33	2 3	Q	R	W

Important Remarks
Dimensions include part protection.
All surfaces apparently tangent must be made tangent. Maximal misalignment allowed 0.07

PRODUCT: INV
NAME: TERMINAL LEFT

REV	DATE	BY	DESCRIPTION	DATE	BY	DESCRIPTION
1	18.10.2004	E.H.	INITIAL DRAWING	18.10.2004	E.H.	INITIAL DRAWING
2	04.12.2004	E.H.	REVISION	04.12.2004	E.H.	REVISION
3	20.10.2005	E.H.	REVISION	20.10.2005	E.H.	REVISION
4	20.10.2005	E.H.	REVISION	20.10.2005	E.H.	REVISION

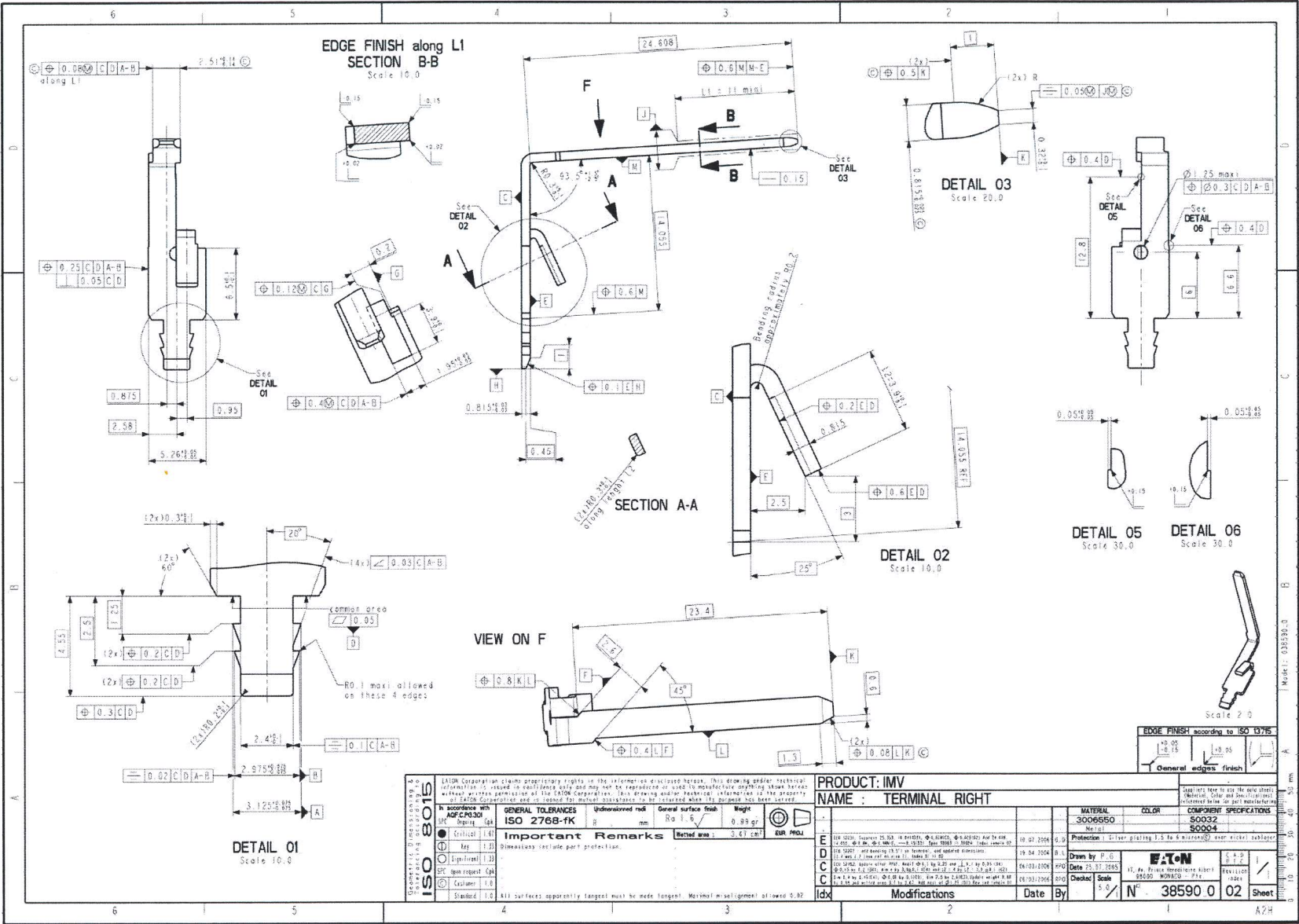
Material: 3006550
Color: S0032 S0004
Protection: Silver plating 1.3 to 0.8 micrometers, pass nickel substrate

Drawn by: P.C.
Date: 18.10.2004
Checked: S.B. Scale: 5:8
Part Number: 38589 0 02

Modifications	Date	By

Made in: SPAIN

B	ISO 8015 - Surface finish Ra 1.6 with 0.25, Ra 0.8 with 0.125, Ra 0.4 with 0.063	18.10.2004	E.H.
B	Initial drawing (18.10.2004) - 18.10.2004	18.10.2004	E.H.
A	ISO 8015 - Surface finish Ra 1.6 with 0.25, Ra 0.8 with 0.125, Ra 0.4 with 0.063	20.10.2005	E.H.



<p>ISO 9001 CERTIFIED</p>	<p>ISO 9001:2008</p>	<p>ISO 14001:2004</p>	<p>ISO 13715:2004</p>
	<p>ISO 9001:2008</p>	<p>ISO 14001:2004</p>	<p>ISO 13715:2004</p>
	<p>ISO 9001:2008</p>	<p>ISO 14001:2004</p>	<p>ISO 13715:2004</p>

GENERAL TOLERANCES
ISO 2768-fK

Important Remarks
Dimensions include part protection.

General surface finish
Ra 1,6

Weight
0,99 gr

Blasted area
3,67 cm²

EUR PREU

<p>PRODUCT: IMV NAME: TERMINAL RIGHT</p>		<p>Material: 3006650</p>		<p>Color: 30032</p>		<p>Component Specifications: 30034</p>	
<p>10.02.2006</p>	<p>10.02.2006</p>	<p>10.02.2006</p>	<p>10.02.2006</p>	<p>10.02.2006</p>	<p>10.02.2006</p>	<p>10.02.2006</p>	<p>10.02.2006</p>
<p>Drawn by: P.G.</p>	<p>Date: 20.07.2008</p>	<p>Checked: S.S.</p>	<p>Scale: N°</p>	<p>38590</p>	<p>02</p>	<p>Sheet</p>	<p>A2H</p>

<p>B</p>	<p>ISO 13715:2004</p>	<p>10.10.2004</p>	<p>0,1</p>
<p>B</p>	<p>ISO 13715:2004</p>	<p>14.10.2005</p>	<p>0,1</p>
<p>A</p>	<p>ISO 13715:2004</p>	<p>20.01.2005</p>	<p>0,1</p>