

2.0 APPLICABLE DOCUMENTS: THE FOLLOWING DOCUMENTS, OF THE ISSUE IN EFFECT ON DATE OF INVITATION FOR BIDS, FORM A PART OF THIS DRAWING TO THE EXTENT SPECIFIED HEREIN.

MILITARY SPECIFICATION

MIL-T-10727

TIN PLATING, ELECTRODEPOSITED OR HOT-DIPPED, FOR FERROUS AND NONFERROUS METALS

MILITARY STANDARD

MIL-STD-202

TEST METHODS FOR ELECTRONIC AND ELECTRICAL COMPONENT PARTS

INDUSTRY STANDARDS

ASTM B36

STANDARD SPECIFICATION FOR BRASS PLATE, SHEET, STRIP, AND ROLLED BAR

3.0 REQUIREMENTS:

3.1 ELECTRICAL: THIS SECTION IS NOT APPLICABLE TO THIS DRAWING.

3.2 MECHANICAL:

3.2.1 MATERIAL AND FINISH: BRASS 0.025 INCH THICK IN ACCORDANCE WITH ASTM B36, ALLOY 260 OR EQUIVALENT WITH MATT ACID TIN PLATING 0.0002 INCH MINIMUM IN ACCORDANCE WITH MIL-T-10727, TYPE II.

3.3 ENVIRONMENTAL:

3.3.1 SOLDERABILITY: TEST IN ACCORDANCE WITH MIL-STD-202, METHOD 208.

3.4 MARKING: INDIVIDUAL PART PACKAGES SHALL BE CLEARLY AND LEGIBLY MARKED WITH THE MANUFACTURER'S NAME, SYMBOL, OR CAGE CODE, MANUFACTURER'S PART NUMBER, AND THE QUANTITY OF PARTS.

SIZE	CAGEC	DWG NO	REV
A	13499	304-1089	H
SCALE NONE	i304-1089h	SHEET	2

4.0 QUALITY ASSURANCE PROVISIONS:

4.1 QUALITY CONFORMANCE INSPECTION: THE SUPPLIERS SHALL BE RESPONSIBLE FOR THOSE IN-PROCESS CONTROLS AND INSPECTIONS NECESSARY TO SUPPLY A PRODUCT CONSISTENTLY CONFORMING TO THE REQUIREMENTS OF THIS DRAWING.

THE PROCURING ACTIVITY RESERVES THE RIGHT TO INSPECT FOR ANY OF THE REQUIREMENTS OF THIS DRAWING TO DETERMINE THE ACCEPTABILITY OF A LOT AND TO REJECT NON-CONFORMING PARTS, OR LOTS CONTAINING NON-CONFORMING PARTS, ON THE BASIS OF TEST RESULTS SO OBTAINED.

4.2 DESIGN CHANGE APPROVAL: ANY CHANGES IN FORM, FIT, FUNCTION, MATERIALS OR PERFORMANCE THAT AFFECT THE PART OR MATERIALS DEFINED BY THIS DRAWING MUST BE APPROVED BY THE COGNIZANT PROCURING ACTIVITY PRIOR TO THE INCORPORATION OF THE PROPOSED CHANGES.

5.0 PREPARATION FOR DELIVERY:

5.1 THE PARTS SHALL BE PACKAGED IN A MANNER THAT WILL AFFORD ADEQUATE PROTECTION AGAINST CONTAMINATION, DETERIORATION, CORROSION, AND PHYSICAL DAMAGE DURING SHIPMENT AND STORAGE. PARTS SHALL BE PACKAGED SO THEY WILL BE EASILY ACCESSIBLE WITHOUT DAMAGING THE PARTS.

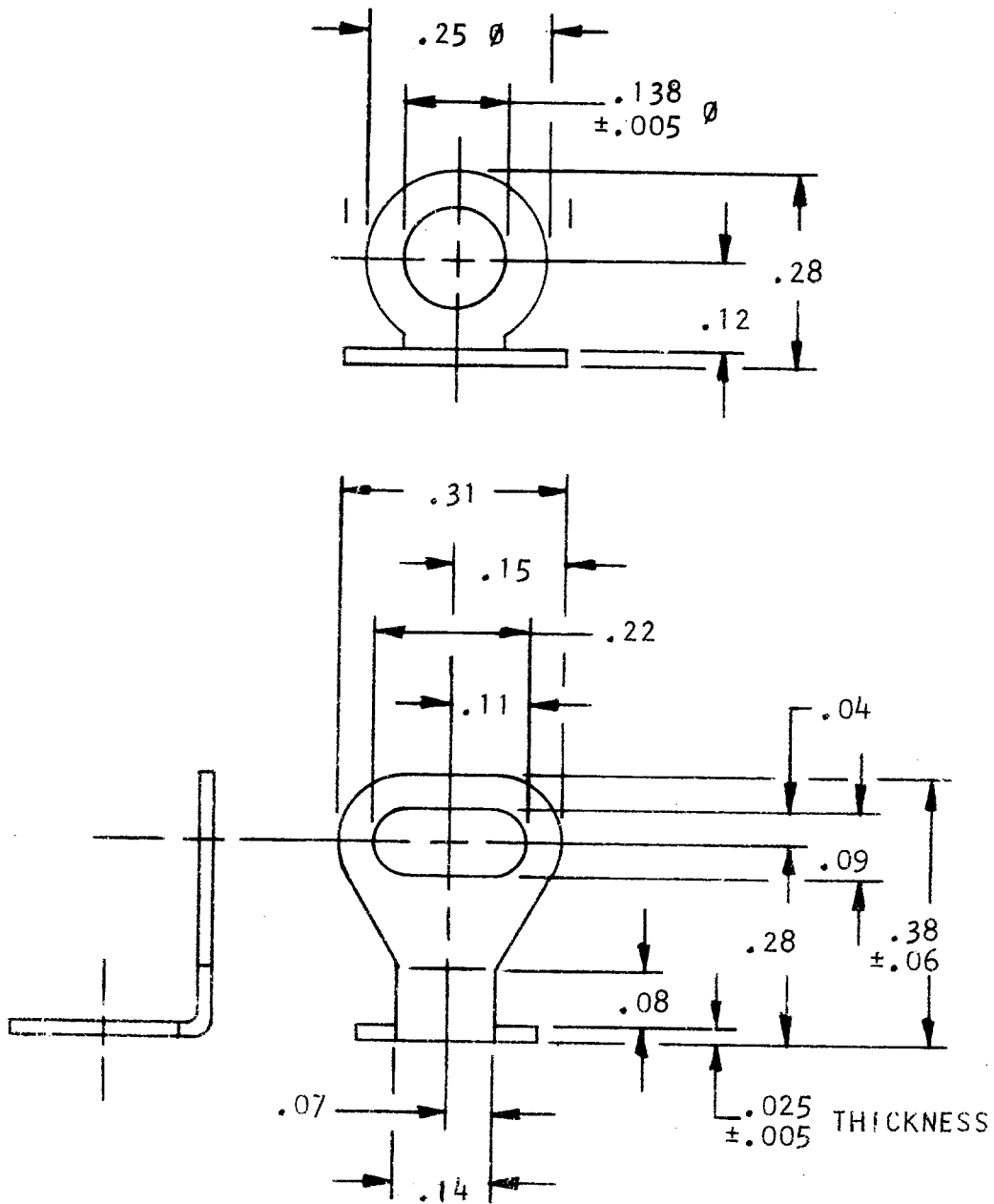
6.0 NOTES: THE INFORMATION CONTAINED IN THIS SECTION IS FOR REFERENCE ONLY.

6.1 IDENTIFICATION OF THE SUGGESTED SOURCE(S) OF SUPPLY HEREON IS NOT TO BE CONSTRUED AS A GUARANTEE OF PRESENT OR CONTINUED AVAILABILITY AS A SOURCE OF SUPPLY FOR THE ITEM(S).

6.2 DISCLAIMER: IT IS THE INTENT OF THIS DRAWING THAT THE VENDOR PART NUMBER(S) LISTED HEREIN MEET THE REQUIREMENTS SPECIFIED HEREIN. IF THE SUPPLIER OF THE PART WHEN REVIEWING THIS DRAWING DISCOVERS A DISCREPANCY IN THE REQUIREMENTS, IT IS THE SUPPLIER'S RESPONSIBILITY TO NOTIFY THE PROCURING ACTIVITY FOR CORRECTIVE ACTION.

6.3 UNIT OF MEASURE: PIECES (PC).

SIZE	CAGEC	DWG NO	REV
A	13499	304-1089	H
SCALE NONE	i304-1089h	SHEET 3	



MECHANICAL CONFIGURATION

FIGURE 1

UNLESS OTHERWISE SPECIFIED DIM ARE
 IN INCHES: TOL ON: ANGLES: $+1.0^\circ$
 DECIMALS: $.XX = \pm .02$, $.XXX = \pm .008$

SIZE A	CAGEC 13499	DWG NO 304-1089	REV H
SCALE NONE		SHEET 4	