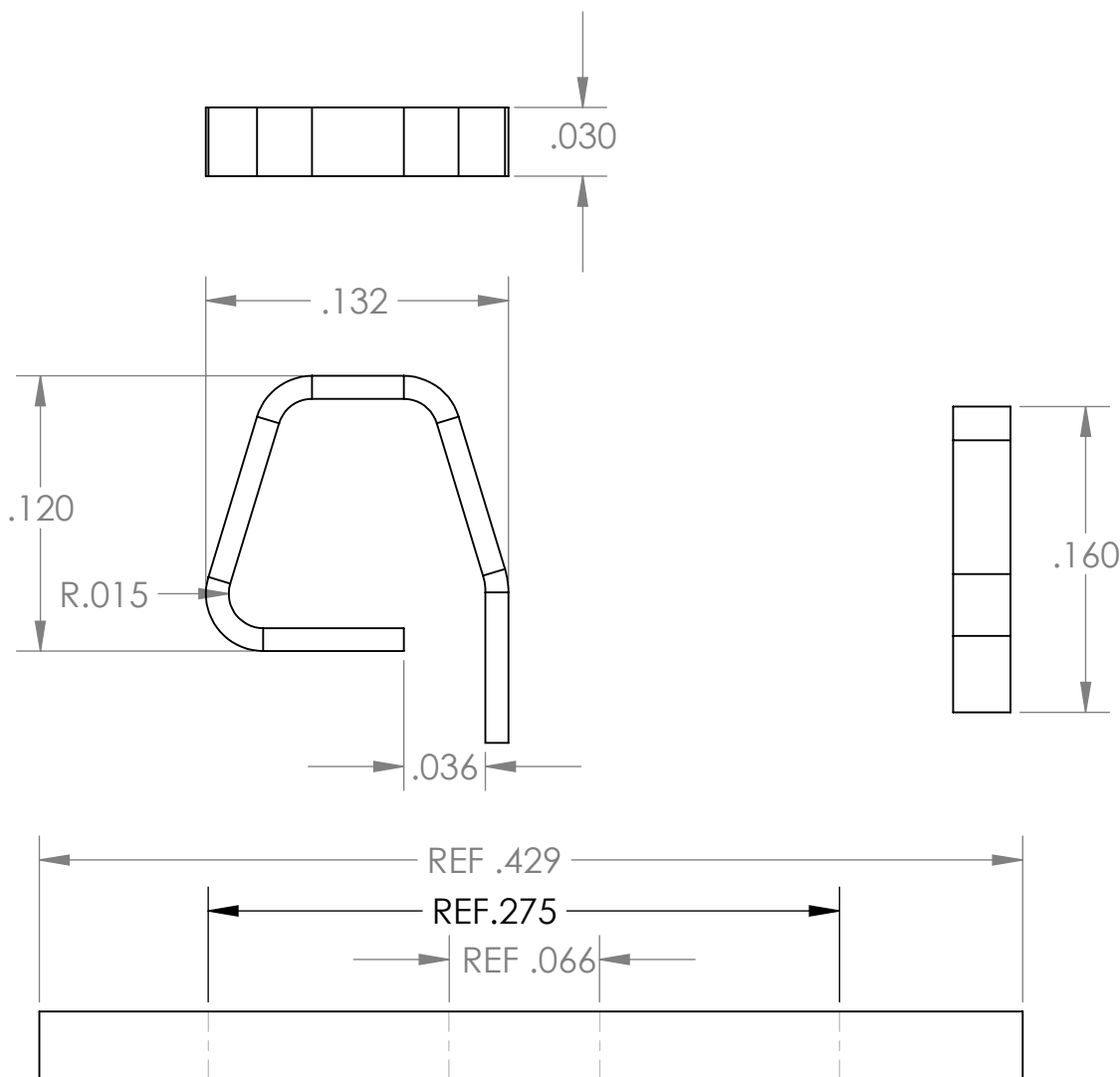


PRE-RELEASE CHANGE HISTORY

-DATE-	-BY-	-DESCRIPTION-	-SYMBOL-	-ISSUE-
2-21-13	CG	PRE-RELEASE	-	A



FLAT PATTERN

Dimensions are shown in inches

PRE-RELEASE DRAWING

THE CONTENTS OF THIS DRAWING ARE
PRE-RELEASE FOR DEVELOPMENT ONLY
AND NOT TO BE USED FOR PRODUCTION

-- PROPRIETARY DESIGN - "CONFIDENTIAL" --

ALL INFORMATION CONTAINED ON THIS DRAWING IS CONFIDENTIAL AND THE SOLE PROPERTY OF
IDEAL INDUSTRIES, INC.. UNAUTHORIZED COPYING OR DISTRIBUTION OF THIS DOCUMENT IS STRICTLY PROHIBITED.

-- UNLESS OTHERWISE SPECIFIED:

THIS DRAWING BASED ON ANSI Y 14.5 SURFACE FINISH 125/V ON MACHINED SURFACES. DIMENSIONS SYMMETRICAL
ABOUT CENTER LINE WHERE APPLICABLE. ON PLATED PARTS ALL DIMENSIONAL LIMITS APPLY AFTER PLATING.
DIMENSIONS OF MOLDED PARTS ARE FOR FINISHED PART. NO ALLOWANCE HAS BEEN MADE FOR SHRINK.

-- HAZARDOUS SUBSTANCE CONTROL:

ANY PRODUCT OR PART THAT CONTAINS LEAD, HEXAVALENT CHROMIUM, MERCURY, CADMIUM, POLYBROMINATED
BIPHENYLS, POLYBROMINATED DIPHENYL ETHERS, PENTABROMO-DIPHENYL ETHER, OR OCTABROMO-DIPHENYL
ETHER MUST BE IN FULL COMPLIANCE WITH EUROPEAN UNION 2002/95/EC & 2003/11/EC DIRECTIVES.

DO NOT SCALE DRAWING

- ALL DIMENSIONS IN INCHES.
- REMOVE ALL BURRS.
- BREAK ALL SHARP EDGES.

TOLERANCES UNLESS
OTHERWISE SPECIFIED
±.02 ANGLES ±0°30'
±.005

PART VOLUME
0.000
CUBIC INCHES

TITLE: CONTACT, TALL MICRO-MINNI

MAT'L: .010" Stk. Thk. 510 Phos Bronze

Tin Plated- 40- 80 microinches

FINISH:

SCALE: 24:1

DRW BY: CG

CKDBY:

APP BY:

DATE

2-27-13

DRWG. NO.

LB-2792



IDEAL INDUSTRIES, INC.
SYCAMORE, ILLINOIS, U.S.A.