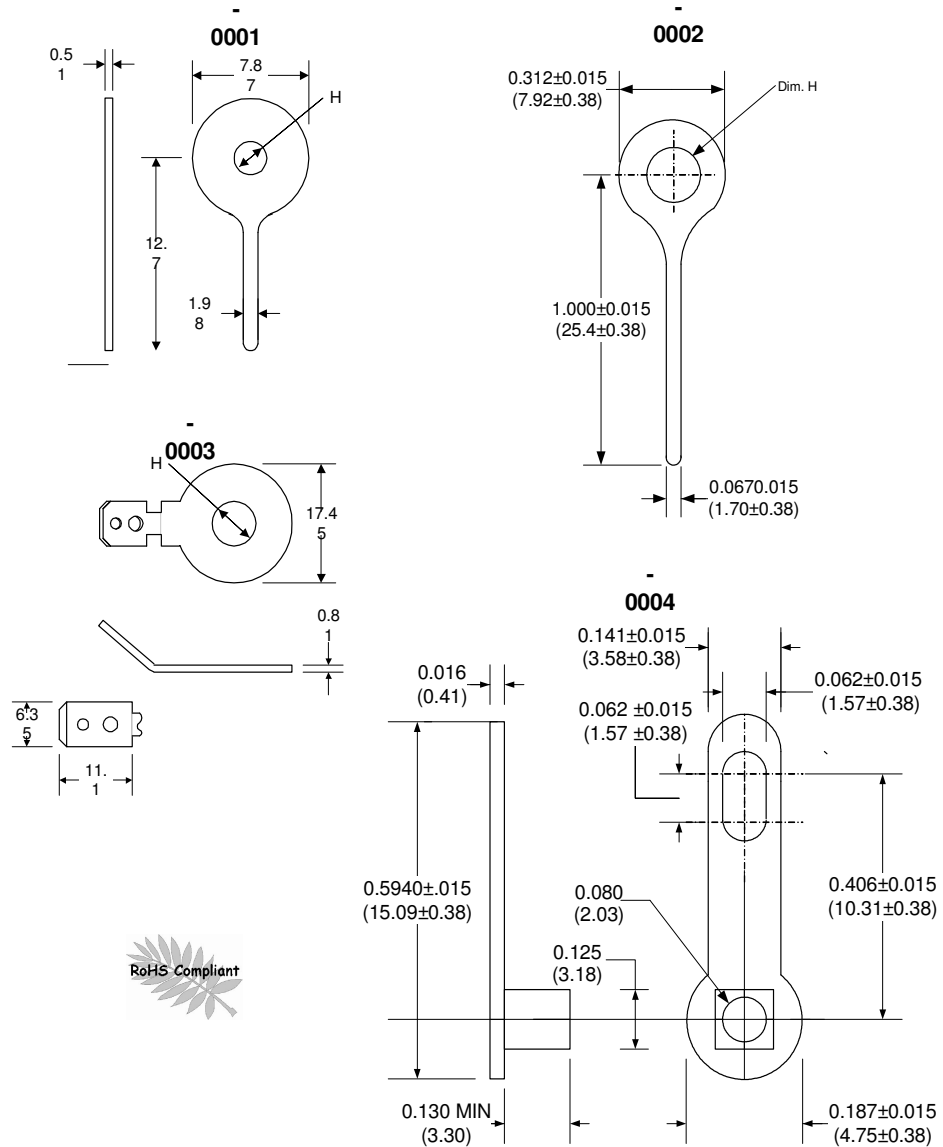


TERMINAL - SOLDER

Material: Brass
Finish: Hot Tin Plate

Dash No.	Dim. "H"	Keystone P/N	Zierick P/N
-0001	3.30	4000	
-0002	3.30		342-.130
-0003	6.73		899
-0004	---		190



F	42124	Added RoHS logo; no rev change	DH	8/5/05
F	9164	Added -0004	DH	8/8/97
E	8451		AR	11/20/96
LTR	ECO #	DESCRIPTION	INC BY	DATE
CONDOR DC POWER SUPPLIES, INC. A SUBSIDIARY OF SL INDUSTRIES 805-486-4565		SHT 1 OF 1	DWG NO. 18-32542	REV F