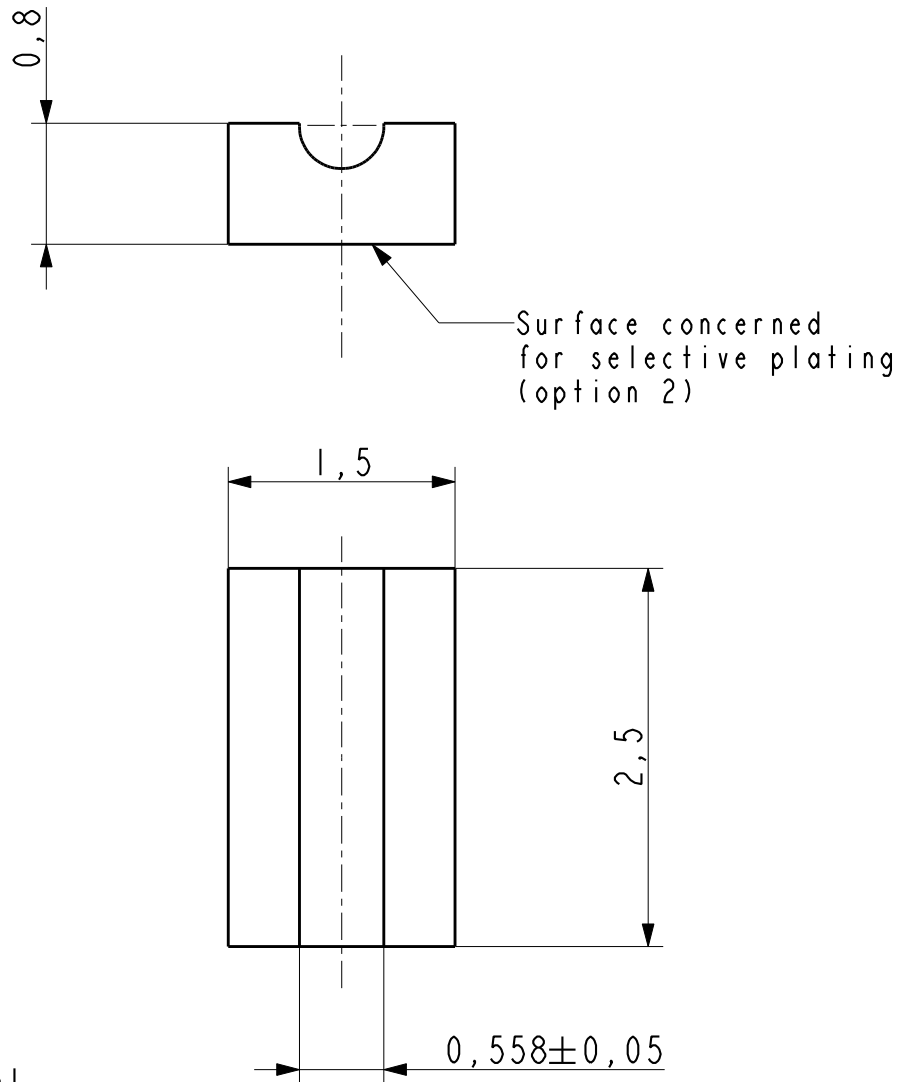


Dimensions are in millimeter



Material :
 * Material 1 : Nickel
 * Material 2 : Copper
 * Material 3 : Constantan
 * Material 4 : Stainless steel

Plating :
 * Method : ENIG (Ni 3-6µm / Au 0,01-0,5µm)
 * Surface : all (option 1), selective (option 2)

FF00892A

This document is SORIN's property. It can not be copied or forwarded without prior agreement of SORIN group.

A	18/11/10	B	18/02/11	C	28/03/11	D	E	F	G
---	----------	---	----------	---	----------	---	---	---	---

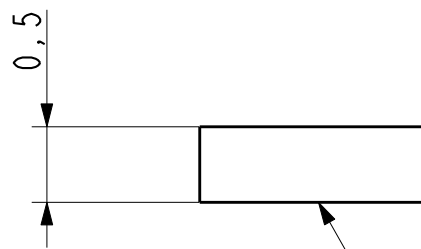
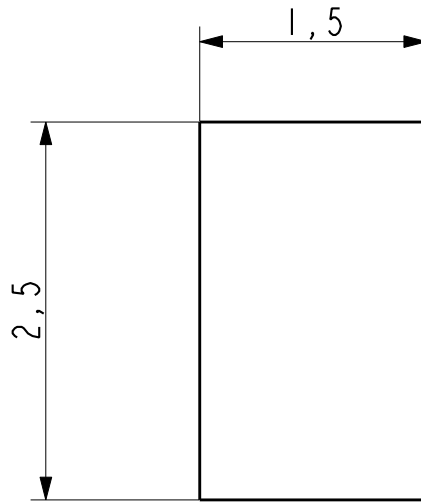
MATERIAL :	REMARKS : For dimension modified, the text must be : Bold, Italic and in Red Color. <i>ex: 2.66±0.05</i>
OVERALL TOLERANCES : ± 0.1 ANGLES : ±	<input type="checkbox"/> numbering for CRM use only.

CARDIAC RHYTHM MANAGEMENT	PAD SOUDURE RAINURE
---------------------------	----------------------------

		Mechanical Studies and Development (MSD)		
--	--	--	--	--

PREPARED BY:	CHECKED BY:	APPROVED BY:	Scale	A 4	-	A	1 / 4
LANG	See sheet 1	See sheet 1	20,000				
DATE	DATE	DATE					

Dimensions are in millimeter



Surface concerned for selective plating (option 2)

Material :

- * Material 1 : Nickel
- * Material 2 : Copper
- * Material 3 : Constantan
- * Material 4 : Stainless steel

Plating :

- * Method : ENIG (Ni 3-6 μ m / Au 0,01-0,5 μ m)
- * Surface : all (option 1), selective (option 2)

FF00892A


This document is SORIN's property. It can not be copied or forwarded without prior agreement of SORIN group.

A	17/11/10	B	18/02/11	C	28/03/11	D	E	F	G
---	----------	---	----------	---	----------	---	---	---	---

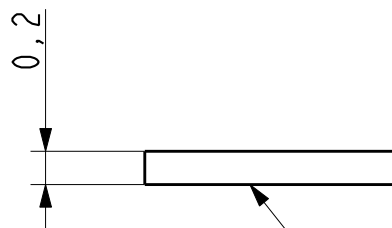
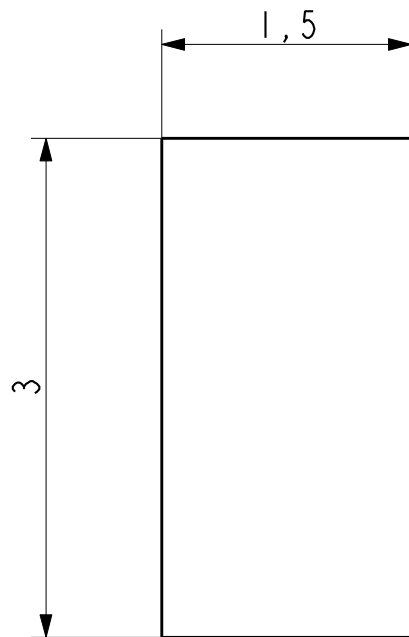
MATERIAL :	REMARKS : For dimension modified, the text must be : Bold, Italic and in Red Color. <i>ex : 2.66±0.05</i>
OVERALL TOLERANCES : ± 0.1 ANGLES : ±	<input type="checkbox"/> numbering for CRM use only.

CARDIAC RHYTHM MANAGEMENT	PAD SOUDURE CAPA
---------------------------	-------------------------

 SORINGROUP <small>AT THE HEART OF MEDICAL TECHNOLOGY</small>		Mechanical Studies and Development (MSD)			
--	--	--	--	--	--

PREPARED BY:	CHECKED BY:	APPROVED BY:	Scale	A 4	-	A	2 / 4
LANG	See sheet 1	See sheet 1	20,000				
DATE	DATE	DATE					

Dimensions are in millimeter



Surface concerned for selective plating (option 2)

Material :


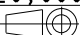
- * Material 1 : Nickel
- * Material 2 : Copper
- * Material 3 : Constantan
- * Material 4 : Stainless steel

Plating :

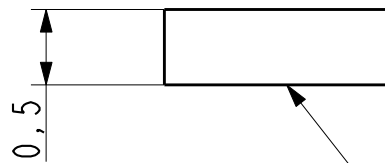
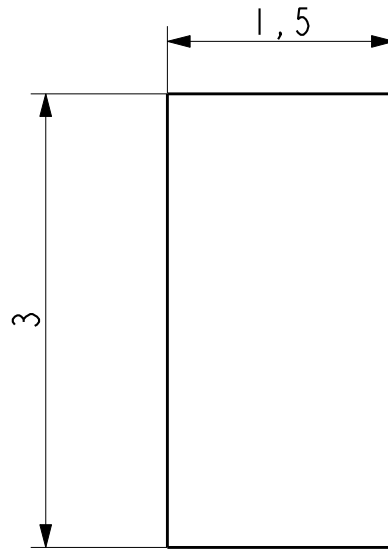
- * Method : ENIG (Ni 3-6 μ m / Au 0,01-0,5 μ m)
- * Surface : all (option 1), selective (option 2)

FF00892A

This document is SORIN's property. It can not be copied or forwarded without prior agreement of SORIN group.

A	28/03/11	B	C	D	E	F	G
MATERIAL :				REMARKS : For dimension modified, the text must be : Bold, Italic and in Red Color. ex : 2.66±0.05			
OVERALL TOLERANCES : ± 0.1				ANGLES : ±			
				<input type="checkbox"/> numbering for CRM use only.			
CARDIAC RHYTHM MANAGEMENT				PAD SOUDURE BRIDGE FLEX			
 SORINGROUP <small>AT THE HEART OF MEDICAL TECHNOLOGY</small>				Mechanical Studies and Development (MSD)			
PREPARED BY:	CHECKED BY:	APPROVED BY:		Scale	A 4	-	A
LANG	See sheet 1	See sheet 1		20,000			
DATE	DATE	DATE					

Dimensions are in millimeter



Surface concerned for selective plating (option 2)

Material :


- * Material 1 : Nickel
- * Material 2 : Copper
- * Material 3 : Constantan
- * Material 4 : Stainless steel

Plating :

- * Method : ENIG (Ni 3-6 μ m / Au 0,01-0,5 μ m)
- * Surface : all (option 1), selective (option 2)

FF00892A

This document is SORIN's property. It can not be copied or forwarded without prior agreement of SORIN group.

A	28/03/11	B	C	D	E	F	G
MATERIAL :				REMARKS : For dimension modified, the text must be : Bold, Italic and in Red Color. <i>ex : 2.66±0.05</i>			
OVERALL TOLERANCES : ± 0.1		ANGLES : ±		<input type="checkbox"/> numbering for CRM use only.			
CARDIAC RHYTHM MANAGEMENT				PAD SOUDURE BRIDGE PCB			
 SORINGROUP <small>AT THE HEART OF MEDICAL TECHNOLOGY</small>				Mechanical Studies and Development (MSD)			
PREPARED BY:	CHECKED BY:	APPROVED BY:		Scale	A 4	-	A
LANG	See sheet 1	See sheet 1		20,000			
DATE	DATE	DATE		