

SUGGESTED SOURCE(S) OF SUPPLY:
 ZIERICK MANUFACTURING CORPORATION
 RADIO CIRCLE
 MT KISCO, N.Y. 10549
 CAGE CODE 79963

IDENTIFICATION OF THE "SUGGESTED SOURCE(S) OF SUPPLY
 HEREON IS NOT TO BE CONSTRUED AS A GUARANTEE OF
 PRESENT OR CONTINUED AVAILABILITY AS A SOURCE OF
 SUPPLY FOR THE ITEM(S).

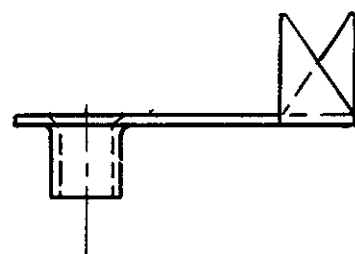
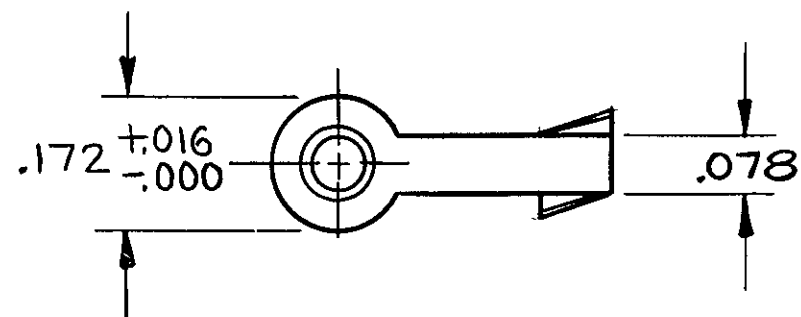


FIG 2
 DIMS IDENTICAL
 TO FIG 1

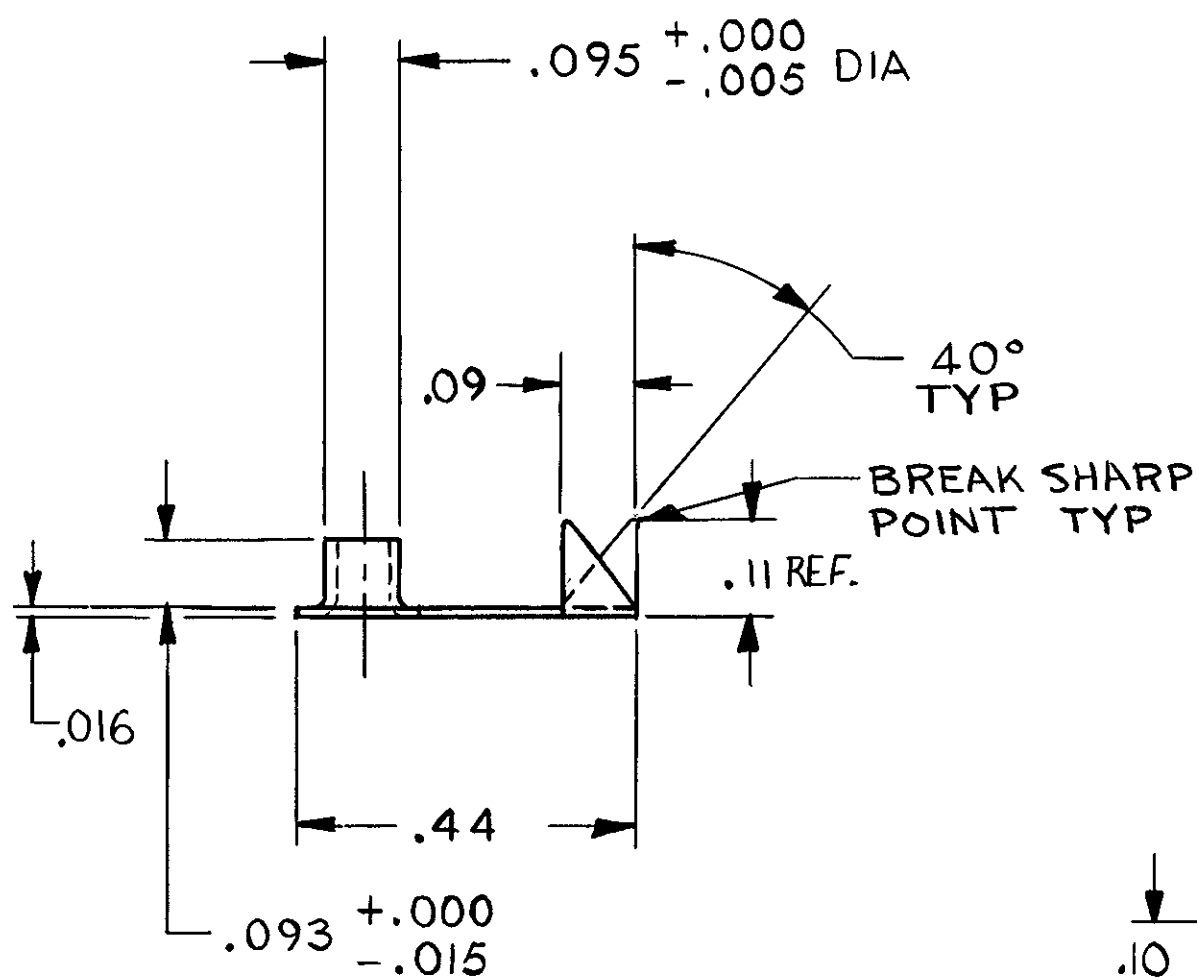


FIG 1

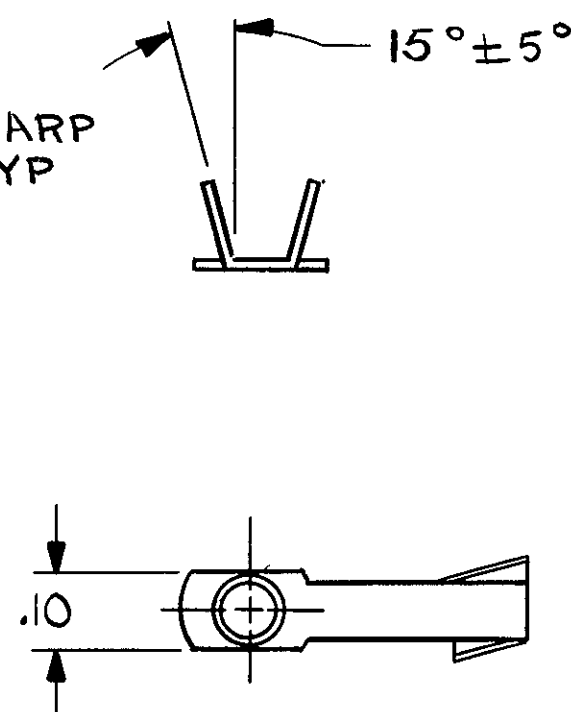


FIG 3
 TOP VIEW SHOWN
 SIDE VIEW LIKE FIG 2

REVISIONS				1071
LTR	DESCRIPTION	DATE	APPROVED	
J	ECO 14037, CL II (1) REV NOTE 2 D-0389-625, D1411-1131-II, D-1532-052/ PMA-0075	88/11/11	JPC/SP	4056
K	ECO 15887, CL II (1) REV NOTE 2 D-0389-625B	88/11/11	JPC/SP	5735
L	ECO 16573, CL II (1) REV PER ECO D-0389-650, SCP-8408, D-1411-1246-II, PMA-0202, 89-044, CIF-89-196, D-1532-066, D-1483-79	89/1/5	JPC/SP	5958
M	ECO 18499, CL II (1) .10 DIM WAS .100 (2) REV NOTE 2 (3) ADDED SUGGESTED SOURCE OF SUPPLY NOTE	90/10/9	JD/ERH	8191
N	ECO E00026 (1) ADDED NOTE 3 (2) ADDED -5 TO TABLE	97/4/11	HJB/	970461
P	ECO E08726, REV NOTE 2, DEL REFLOWED	03-0078	03-01-21	SL

DASH NO	FIG	MATL	FINISH
NONE	1	QQ-B-613 CU ALLOY 260 ANNEALED	2
1	1	QQ-N-281 CLASS B R MONEL	
2	2	QQ-B-613 CU ALLOY 260 ANNEALED	
3	1	QQ-B-613 CU ALY 260 ANNEALED	
4	3	QQ-B-613 CU ALY 260 ANNEALED	2
5	2	QQ-B-613 CU ALY 260 ANNEALED	3

THIS DRAWING DEPICTS HARDNESS CRITICAL ITEMS (HCI) OR
 HARDNESS CRITICAL PROCESSES (HCP). ALL CHANGES TO OR
 PROPOSED SUBSTITUTIONS OF HCIs OR HCPs MUST BE
 EVALUATED FOR HARDNESS IMPACTS BY THE ENGINEERING
 ACTIVITY RESPONSIBLE FOR SURVIVABILITY.
 ALL ITEMS NOT ANNOTATED **HCIM** OR **HCH** IN THE FIELD
 OF DRAWING ARE CLASSIFIED CATEGORY 2 (**HC2**)

TABULATED DRAWING

ITEM NO.	QTY REQ	CODE IDENT	DWG SIZE	PART OR IDENTIFYING NO	NOMENCLATURE OR DESCRIPTION	SPECIFICATION OR MATERIAL
PARTS LIST						
CONTRACT NO F33657-70-C-0800				SIMMONDS PRECISION PRODUCTS INC. VERGENNES, VERMONT		
DRAWN C. Cadmus		DATE 4-2-73		TERMINAL, LUG		
CHECKED J. Spring		DATE 4-13-73				
APPROVED W. Grant		DATE 4/13/73		C 89305 478812 -		
SIZE		CODE IDENT NO		SCALE 4/1 WEIGHT # SHEET 1 OF 1		

SPECIFICATION CONTROL DRAWING

CONTRACT NO. F34601-82-C-2445

DIMS IN PARENTHESES ARE IN MILLIMETERS	
TOLERANCE CONVERSION	
INCH	MM
± .005	± 0.13
± .010	± 0.25
± .030	± 0.8

DASH NO	NEXT ASSY	USED ON	FINISH
3	B)20000-1003-F)20001-0000	0101 THRU 0107	UNLESS OTHERWISE SPECIFIED DIMENSIONS ARE IN INCHES TOLERANCES ARE .X PLACE XX PLACE XXX PLACE ANGLES ± .03 ± .010 ± .005 ± 1° BREAK ALL SHARP EDGES AND DEBURR SCREW THREADS PER MIL-S-7742 MACHINED SURFACES
3	B)20000-1003-F)20000-0000	0101 & 0102	MATERIAL
	B)1002624-* F)380949-002	0101 & 0121	
			APPLICATION

- 3 SILVER PLATE PER QQ-S-365
.0003 TO .0005 INCH THICK OF HIGH
PURITY SILVER (99.9%).
- 2 SOLDER PLATE PER MIL-P-81728, Sn60-Pb40,
.0002 IN THICK, PERMISSIBLE TO TIN
.10 DIM AREA (FIGURE 3) WITH
Sn 63 SOLDER.

NOTES:

1. SIMILAR TO (C) 249008.

478812 -