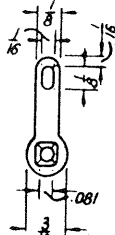
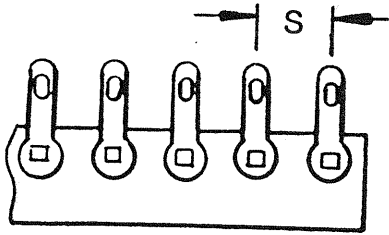


STANDARD LUG ASSEMBLIES

Available mounted on rolls of Fishpaper or Nomex containing 1,000 terminals

R5301

421 LUG ASSEMBLIES

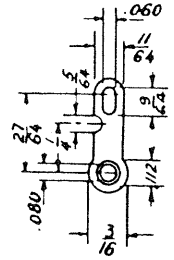
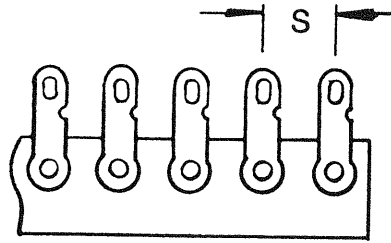


Also available with 90° bend. Specify by adding (-90) after part number.

Tin Plated .023" Thick Brass

Part #	S	Insulating Paper
LS-421-A	1/4"	1/2" wide x .020" thick Fishpaper.
LS-421-B	3/8"	For Nomex add -N to part number
LS-421-C	1/2"	
LS-421-D	5/8"	

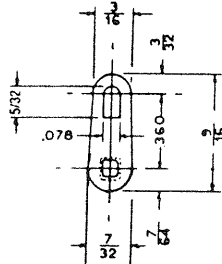
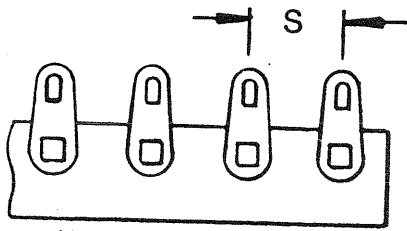
431 LUG ASSEMBLIES



Tin Plated .018" Thick Brass

Part #	S	Insulating Paper
LS-431-A	1/4"	1/2" wide x .020" thick Fishpaper.
LS-431-B	3/8"	For Nomex add -N to part number
LS-431-C	1/2"	
LS-431-D	5/8"	

102 LUG ASSEMBLIES

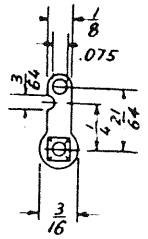
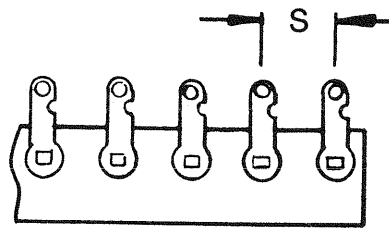


Also available with 90° bend. Specify by adding (-90) after part number.

Tin Plated .017" Thick Steel

Part #	S	Insulating Paper
.S-102-A	1/4"	1/2" wide x .020" thick Fishpaper.
.S-102-B	3/8"	For Nomex, add -N to part number
.S-102-C	1/2"	
.S-102-D	5/8"	

204 LUG ASSEMBLIES

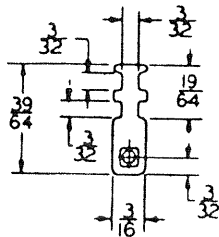
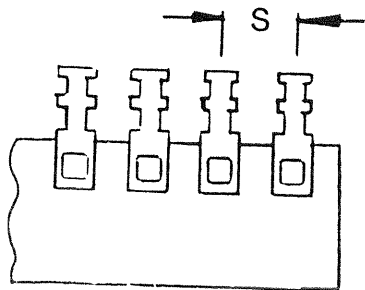


Also available with 90° bend. Specify by adding (-90) after part number.

Tin Plated .016" Thick Brass

Part #	S	Insulating Paper
LS-204-A	1/4"	1/2" wide x .020" thick Fishpaper.
LS-204-B	3/8"	For Nomex add -N to part number
LS-204-C	1/2"	
LS-204-D	5/8"	

978 LUG ASSEMBLIES

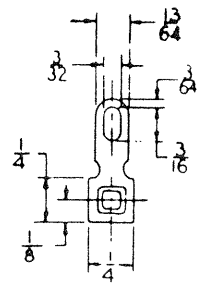
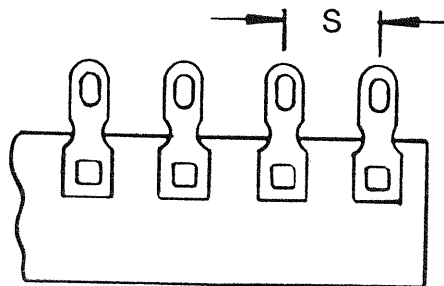


Also available with 90° bend. Specify by adding (-90) after part number.

Tin Plated .023" Thick Brass

Part #	S	Insulating Paper
.S-978-A	3/8"	3/4" wide x .020" thick Fishpaper.
.S-978-B	1/2"	For Nomex add -N to part number

253 LUG ASSEMBLIES



Also available with 90° bend. Specify by adding (-90) after part number.

Tin Plated .023" Thick Brass

Part #	S	Insulating Paper
LS-253-A	3/8"	3/4" wide x .020" thick Fishpaper.
LS-253-B	1/2"	For Nomex add -N to part number
LS-253-C	5/8"	