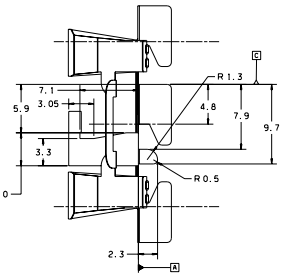
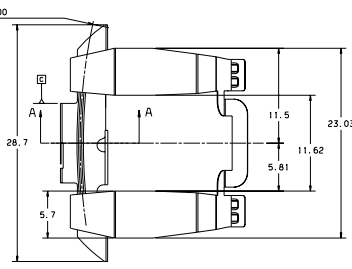
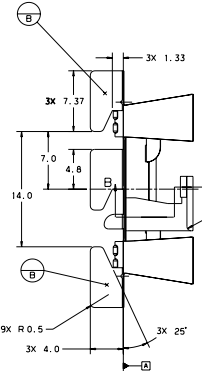
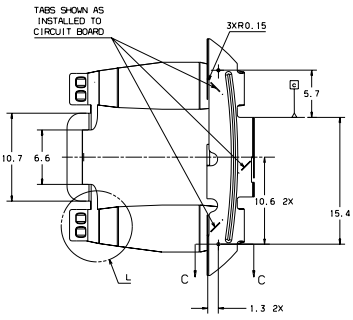


REVISIONS				
ZONE	REV	DESCRIPTION	DATE	APP
--	CHS55	INITIAL RELEASE	12APR05B	B LYNDWARD
B7	A	ECR645 REVISED DIM. HOLE WAS ±.5" NOM 42"	24MAY05	L M
B7	B	ECR6103 REVISED TOLERANCES AND DIMS.	11NOV05	B LYNDWARD
XX	--	ECR6287 INITIAL RELEASE TO EXP. MODIFIED HATH AND DIMENSIONS. INCORPORATED CHANGES FROM DESIGN STUDY. ECR6280 BENT FRONT LEGS 6" FROM VERTICAL. C SATUM CHANGED KEED ADDITIONAL CONTACT POINTS CORRECTED TOLERANCES	05SEP07	L BACHMANN
DS1	DS1	ECR6322 MODIFIED FRONT LEG ANGLE 6" LESS	29OCT07	J DOMINICK
DS1	DS1	ECR6323 REBUILDING MODEL	12NOV07	J DOMINICK
C	C	ECR6287 CHANGE ANGLE ON LEG TO 65.5; 14.5 WAS 12.5	22JAN08	J DOMINICK
D	D	ECR6420 CHANGED DIMENSIONS AND TOLERANCES	21APR08	C HANEY



ISOMETRIC VIEW  
SCALE 1:1



NOTES:

- MATERIAL - 301 STAINLESS STEEL, 0.08MM THK, FULL HARD PER FMGS 5 EXCEPT FOR:
  - a) NICKEL CONTENT: 7% MAXIMUM
  - b) AVERAGE SURFACE ROUGHNESS: Ra=0.15µm MAXIMUM
  - c) YIELD STRENGTH @ 0.2% OFFSET: 1250MPa (181,000 PSI) MINIMUM
  - 1300MPa (190,000 PSI) GOAL
  - d) 15% MINIMUM ELONGATION IN 2 INCHES
- MATERIAL CERTIFICATION, INCLUDING FULL CHEMICAL ANALYSIS AND MECHANICAL RESULTS PER NOTE 2 TO BE INCLUDED WITH EACH SHIPMENT.
- ALL PARTS TO BE STRESS RELIEVED AT 204°C (400°F) FOR 2 HOURS AFTER FORMING.
- MATERIAL SUBSTITUTION IS PROHIBITED. ANY DEVIATION FROM THE SPECIFICATIONS OF THIS DRAWING REQUIRES PRIOR APPROVAL FROM FEDERAL MOGL/WAGNER LIGHTING PRODUCT ENGINEERING.
- PART TO BE FREE OF DIRT, OIL OR BURRS THAT IMPAIR FUNCTION.
- TOOLING LAYOUT TO BE APPROVED BY FEDERAL-MOGL PRODUCT ENGINEERING.

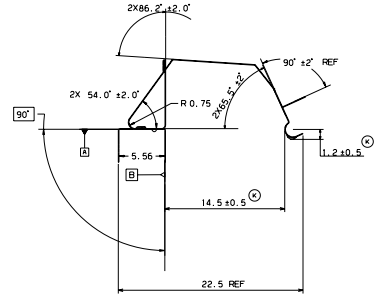
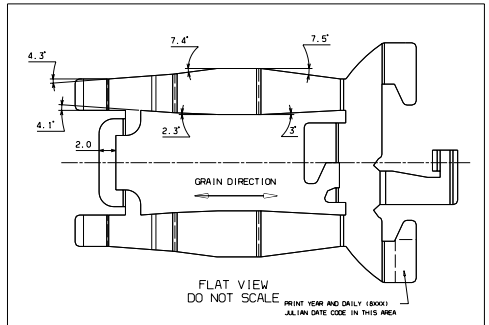
ELECTRONICALLY CONTROLLED DOCUMENT. PLEASE VERIFY REV. LEVEL BEFORE USE.

GENERAL SYMBOLS:  
 (M) MANUFACTURING CRITICAL  
 (C) CUSTOMER CRITICAL

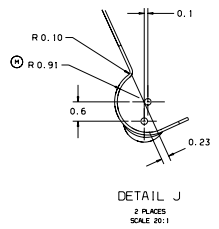
**FEDERAL MOGL**  
 LIGHTING PRODUCTS GROUP  
 100 SMALL HORN STREET, TORRANCE 90503  
 (714) 261-1000 FAX (714) 261-1001  
 WWW.FEDERALMOGL.COM PURCHASED MATERIAL  
 STAMPING, PDD PCB SWITCH  
 CHEVROLET

CONFIDENTIAL  
 THIS DRAWING IS THE PROPERTY OF FEDERAL MOGL AND IS NOT TO BE REPRODUCED OR TRANSMITTED IN ANY MANNER WITHOUT THE WRITTEN PERMISSION OF FEDERAL MOGL

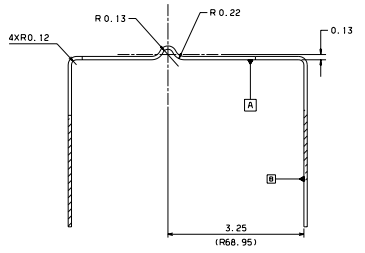
DATE: 08/01/08  
 DRAWING NO: 640006  
 SIZE: D  
 SCALE: 4:1  
 PAGE 1 OF 2



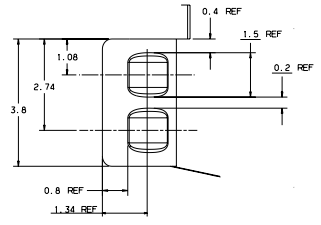
REVISIONS				
ZONE	REV	DESCRIPTION	DATE	APP
-- SEE SHEET 1 FOR REVISION HISTORY				



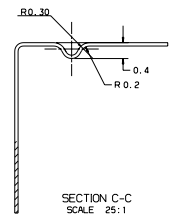
DETAIL J  
2 PLACES  
SCALE 20:1



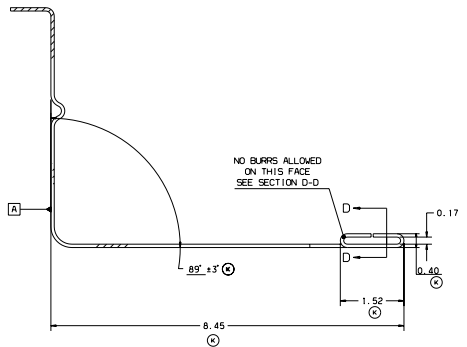
SECTION A-A  
SCALE 25:1



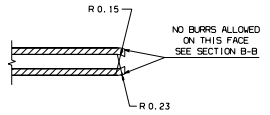
DETAIL L  
SCALE 20:1



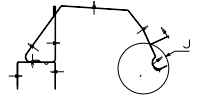
SECTION C-C  
SCALE 25:1  
2 PLACES



SECTION B-B  
SCALE 25:1



SECTION D-D  
SCALE 50:1



AUX VIEW H  
ARROWS SHOW BURR DIRECTION

ELECTRONICALLY CONTROLLED DOCUMENT. PLEASE VERIFY REV. LEVEL BEFORE USE.

<b>GENERAL SYMBOLS:</b> (M) MANUFACTURING CRITICAL (C) CUSTOMER CRITICAL		<b>FEDERAL MOGUL</b> LIGHTING PRODUCTS GROUP 235 SMALL ROAD, SPARTA, TENNESSEE 38483	
DUNN (C) DAVIS 21APR08 CHAI (C) HANEY 21APR08	STARR08B STARR08B	DIMENSIONS ARE IN INCHES UNLESS OTHERWISE SPECIFIED TOLERANCES ARE: ANGULAR ± 1° 1 PLACE DEC ± 0.1 2 PLACE DEC ± 0.05 3 PLACE DEC ± 0.01	PURCHASED MATERIAL STAMPINGS, LED POD SWITCH CHRYSLER NO. DRAWING NO. 640006
<b>CONFIDENTIAL</b> THE INFORMATION CONTAINED HEREIN IS UNCLASSIFIED EXCEPT WHERE SHOWN OTHERWISE. IT IS THE PROPERTY OF FEDERAL MOGUL. IT IS LOANED TO YOUR COMPANY UNDER A LICENSE OF USE. NO DISSEMINATION OR USE OF THE INFORMATION IS PERMITTED.		FINISH - SHEET 1 SIZE: D SCALE: N/A	SHEET: 1 OF 1 DRAWING NO. 640006 PAGE 2 OF 2

