

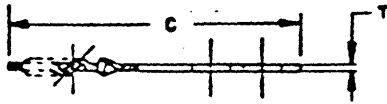
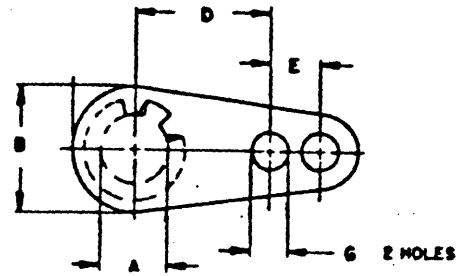
32002-04 A thru Q

Locking Screw Hole.

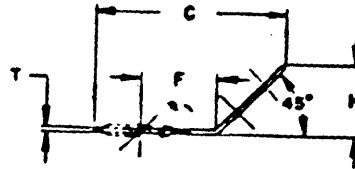
Bronze, hot solder dip.

Material thickness .018(T)

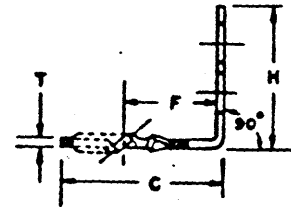
Shakeproof or equivalent.



Form 1



Form 2



Form 3

Dash No.	Screw Size	Form	A	B	C	D	E	F	G	H	Mfg. No.
-04A	3	2	.109-.102	5/16	41/64	-	1/8	1/4	3/32	15/64	2104-03-00
-04B	4	1	.123-.116	5/16	23/32	11/32	1/8	-	3/32	-	2102-04-00
-04C	4	1	.123-.116	5/16	23/32	11/32	1/8	-	*	-	2102-04-01
-04D	4	2	.123-.116	5/16	5/8	-	1/8	1/4	3/32	15/64	2104-04-00
-04E	4	2	.123-.116	5/16	5/8	-	1/8	1/4	*	15/64	2104-04-01
-04F	4	3	.123-.116	5/16	27/64	-	1/8	1/4	3/32	21/64	2102-04-02
-04G	5	1	.136-.129	5/16	23/32	11/32	1/8	-	3/32	-	2102-05-00
-04H	5	2	.136-.129	5/16	41/64	-	1/8	1/4	3/32	15/64	2104-05-00
-04I	6	1	.150-.142	5/16	23/32	11/32	1/8	-	3/32	-	2102-06-00
-04J	6	1	.150-.142	5/16	23/32	11/32	1/8	-	*	-	2102-06-02
-04K	6	2	.150-.142	5/16	5/8	-	1/8	1/4	3/32	15/64	2104-06-00
-04L	6	2	.150-.142	5/16	5/8	-	1/8	1/4	*	15/64	2104-06-02
-04M	6	3	.150-.142	5/16	27/64	-	1/8	1/4	3/32	21/64	2102-06-03
-04N	8	1	.176-.168	5/16	23/32	11/32	1/8	-	3/32	-	2102-08-00
-04O	8	2	.176-.168	5/16	5/8	-	1/8	1/4	3/32	15/64	2104-08-00
-04P	9	2	.187-.182	5/16	41/64	-	1/8	1/4	3/32	15/64	2104-09-01
-04Q	10	2	.204-.195	5/16	41/64	-	1/8	1/4	3/32	15/64	2104-10-00

HONEYWELL INTERNATIONAL INC.  
REDMOND, WASHINGTON 98073-9701

**Honeywell**

PREPARED BY 1 Bloecker 4-3-85

CHECKED BY *Reed* 4-3-85

APP'D BY

FSCM NO. 97896

DWG NO. 32002

SHEET 5 OF

TITLE

LUG, SOLDER

ISSUE - THIS DRAWING IS INCOMPLETE WITHOUT REVISION SHEET 1 AND SHEETS OF APPLICABLE NOTES.